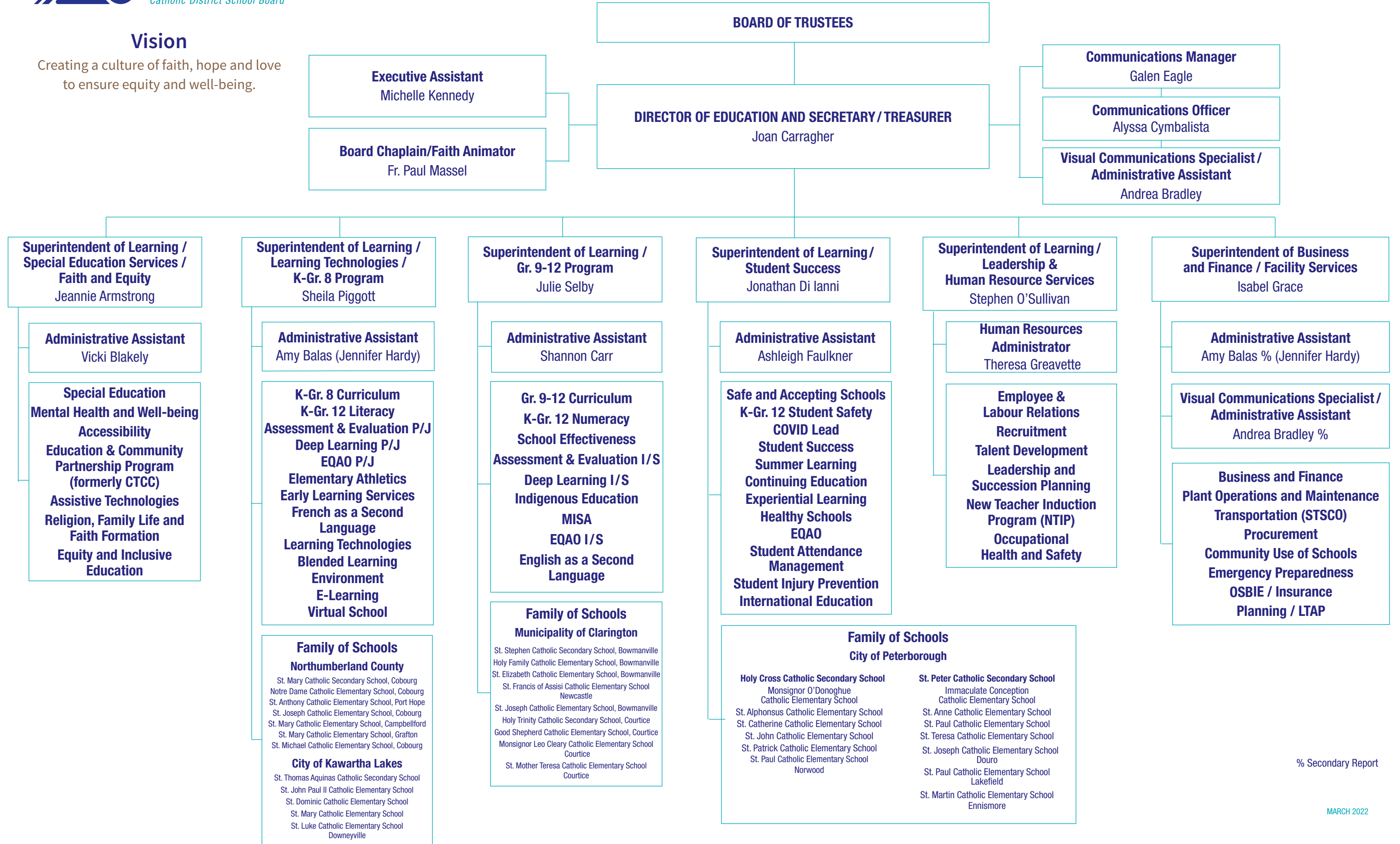


ORGANIZATIONAL CHART A

Vision

Creating a culture of faith, hope and love
to ensure equity and well-being.

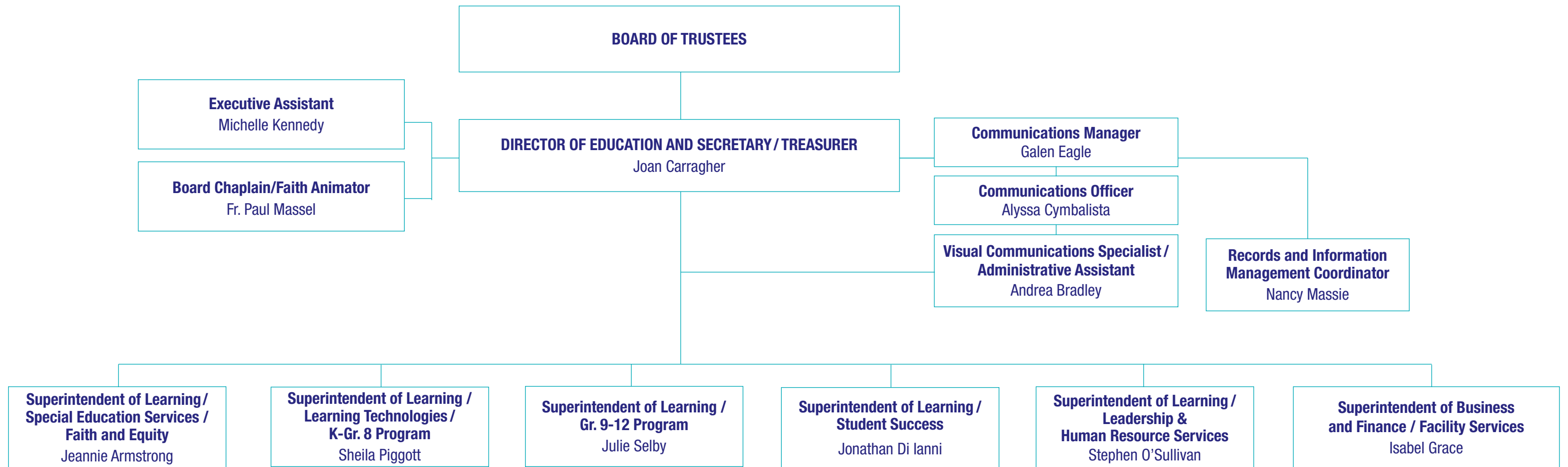


% Secondary Report

Vision

Creating a culture of faith, hope and love
to ensure equity and well-being.

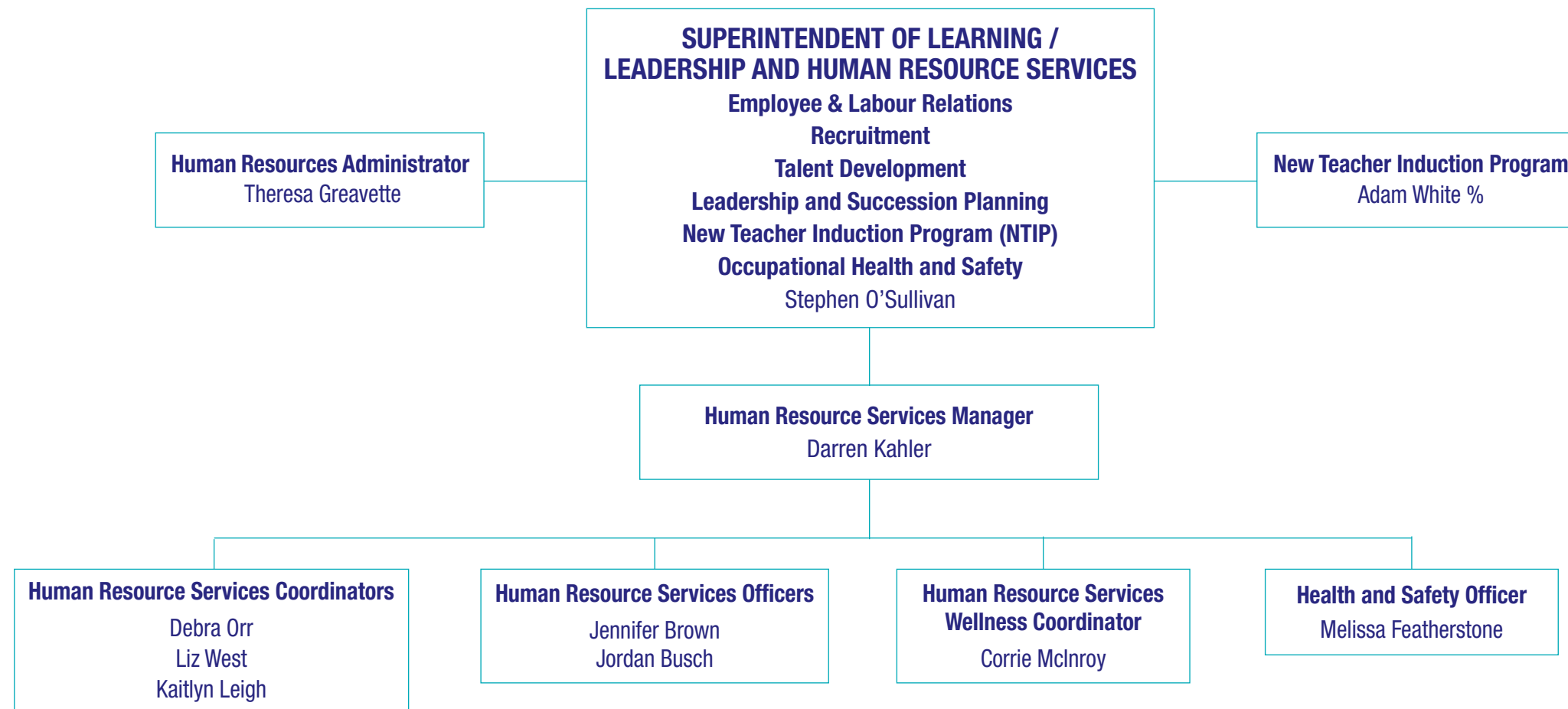
ORGANIZATIONAL CHART B



Vision

Creating a culture of faith, hope and love
to ensure equity and well-being.

ORGANIZATIONAL CHART C



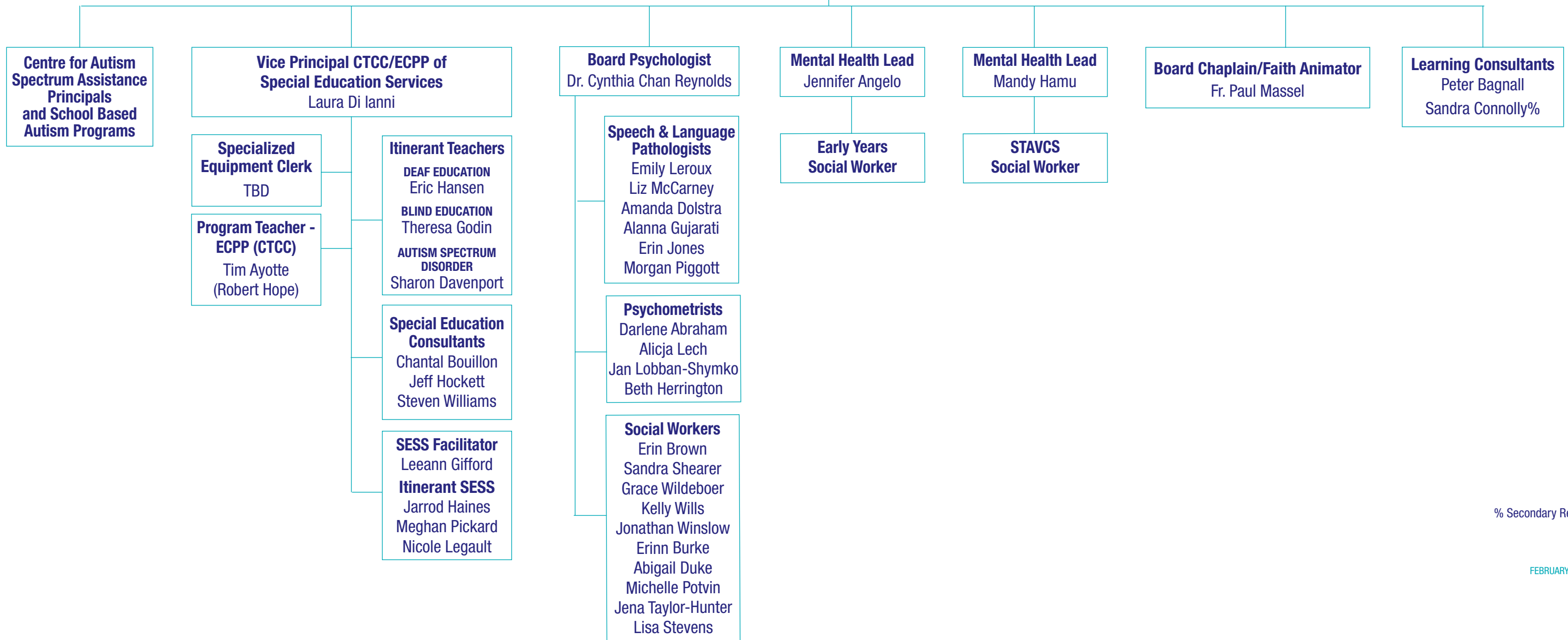
ORGANIZATIONAL CHART D

Vision

Creating a culture of faith, hope and love
to ensure equity and well-being.

**SUPERINTENDENT OF LEARNING /
SPECIAL EDUCATION SERVICES**
Special Education
Mental Health and Well-being
Accessibility
Education & Community Partnership Program
(formerly CTCC)
Assistive Technologies
Religion, Family Life and Faith Formation
Equity and Inclusive Education
Jeannie Armstrong

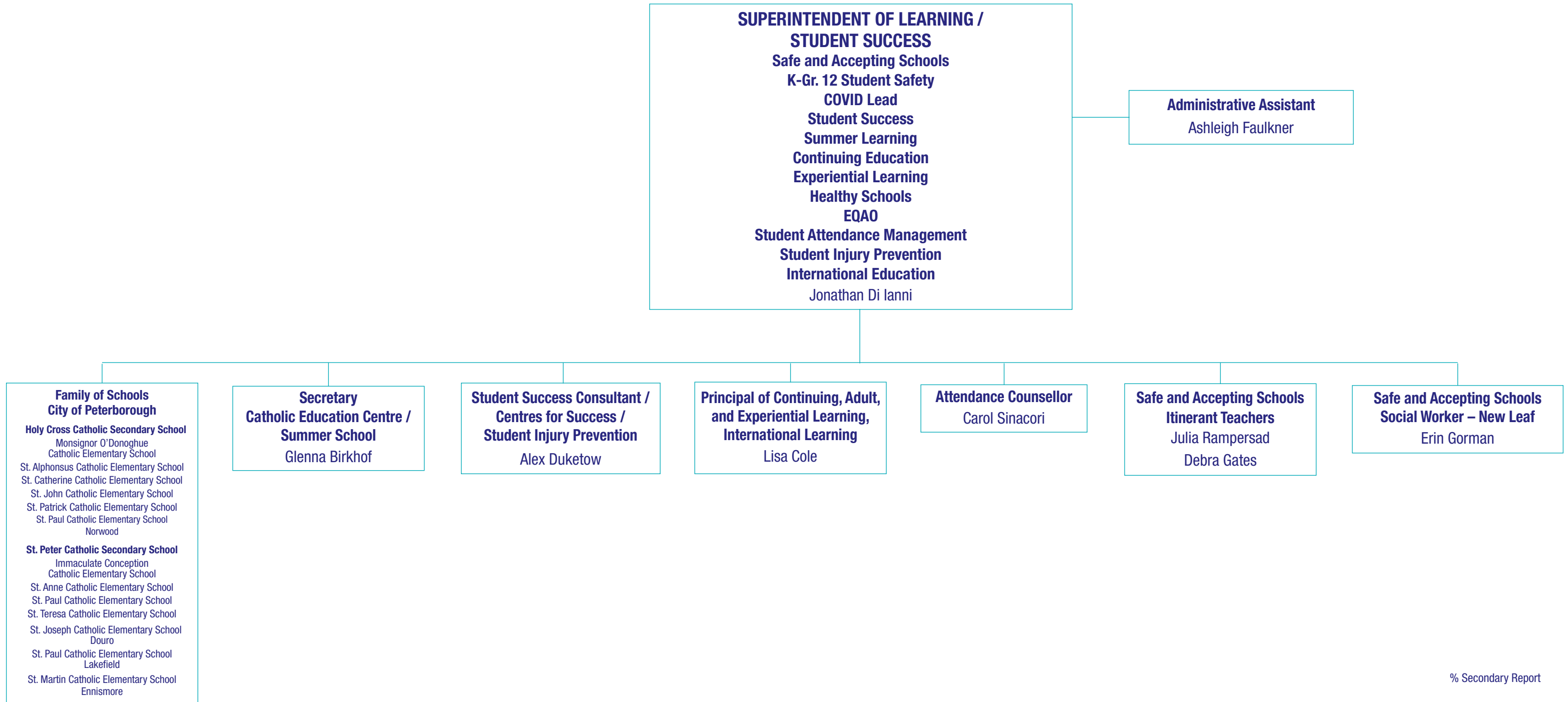
Administrative Assistant
Vicki Blakely



Vision

Creating a culture of faith, hope and love
to ensure equity and well-being.

ORGANIZATIONAL CHART E

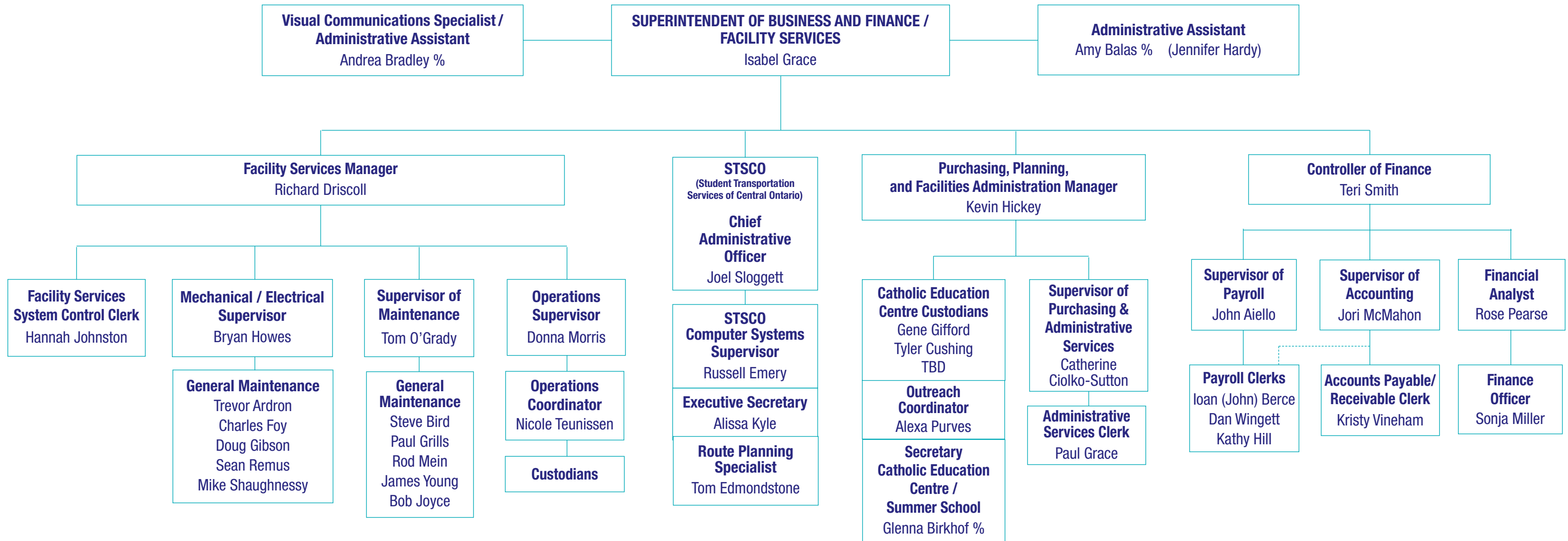


% Secondary Report

Vision

Creating a culture of faith, hope and love
to ensure equity and well-being.

ORGANIZATIONAL CHART F

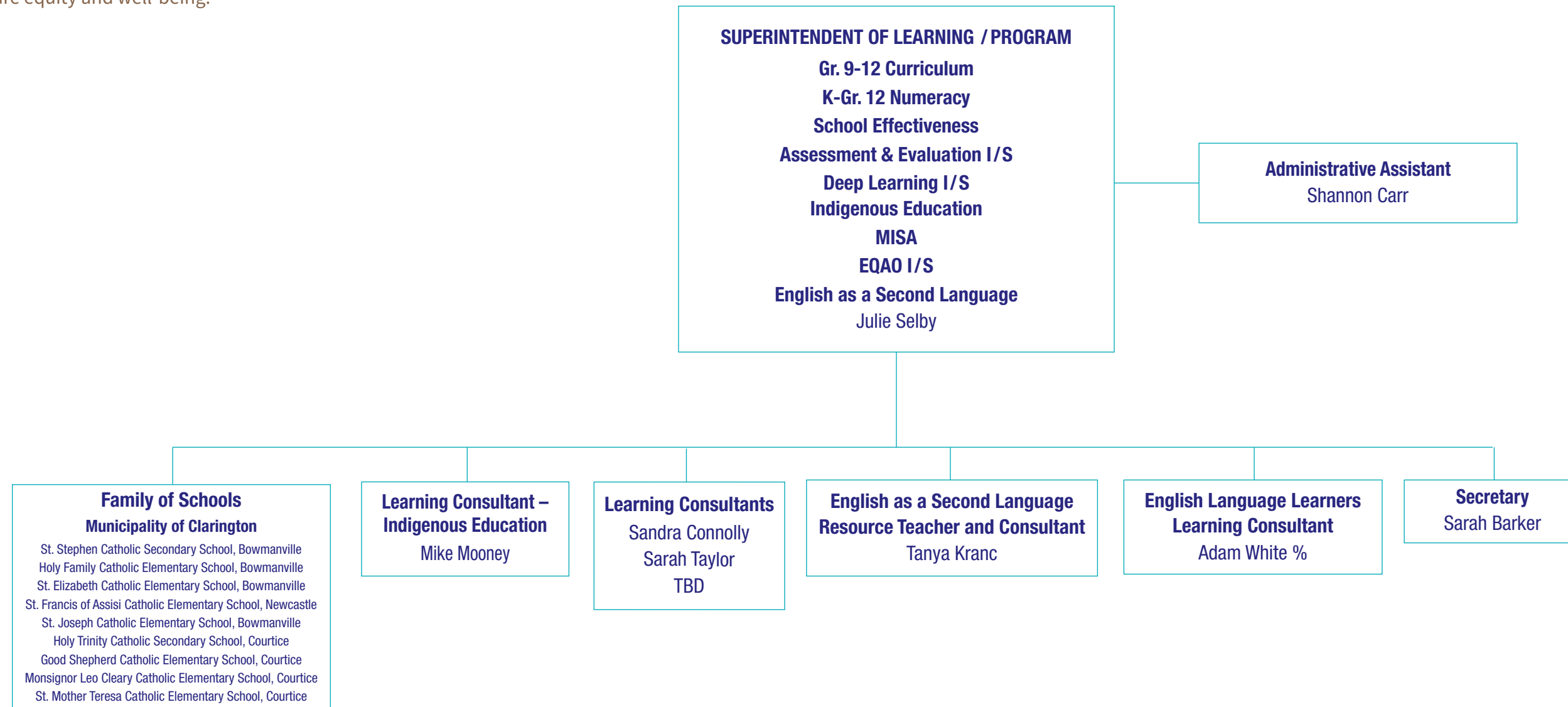


Vision

Creating a culture of faith, hope and love
to ensure equity and well-being.

ORGANIZATIONAL CHART

G

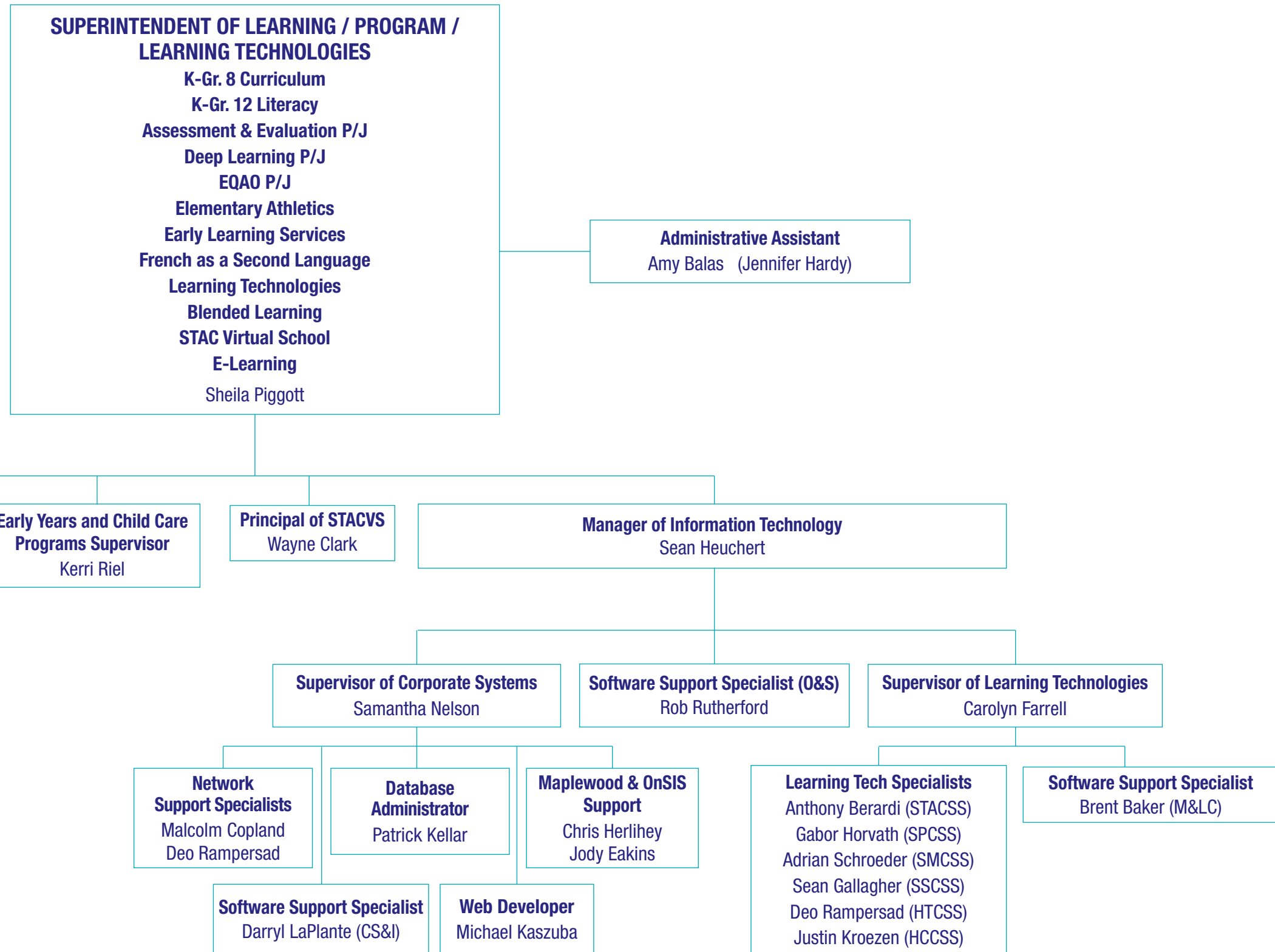


I/S = Intermediate/Secondary
% Secondary Report

ORGANIZATIONAL CHART

Vision

Creating a culture of faith, hope and love
to ensure equity and well-being.



M&LC = Mobile Devices and Learning Commons
CS&I = Corporate Systems and Integrations
O&S = Operations and Security