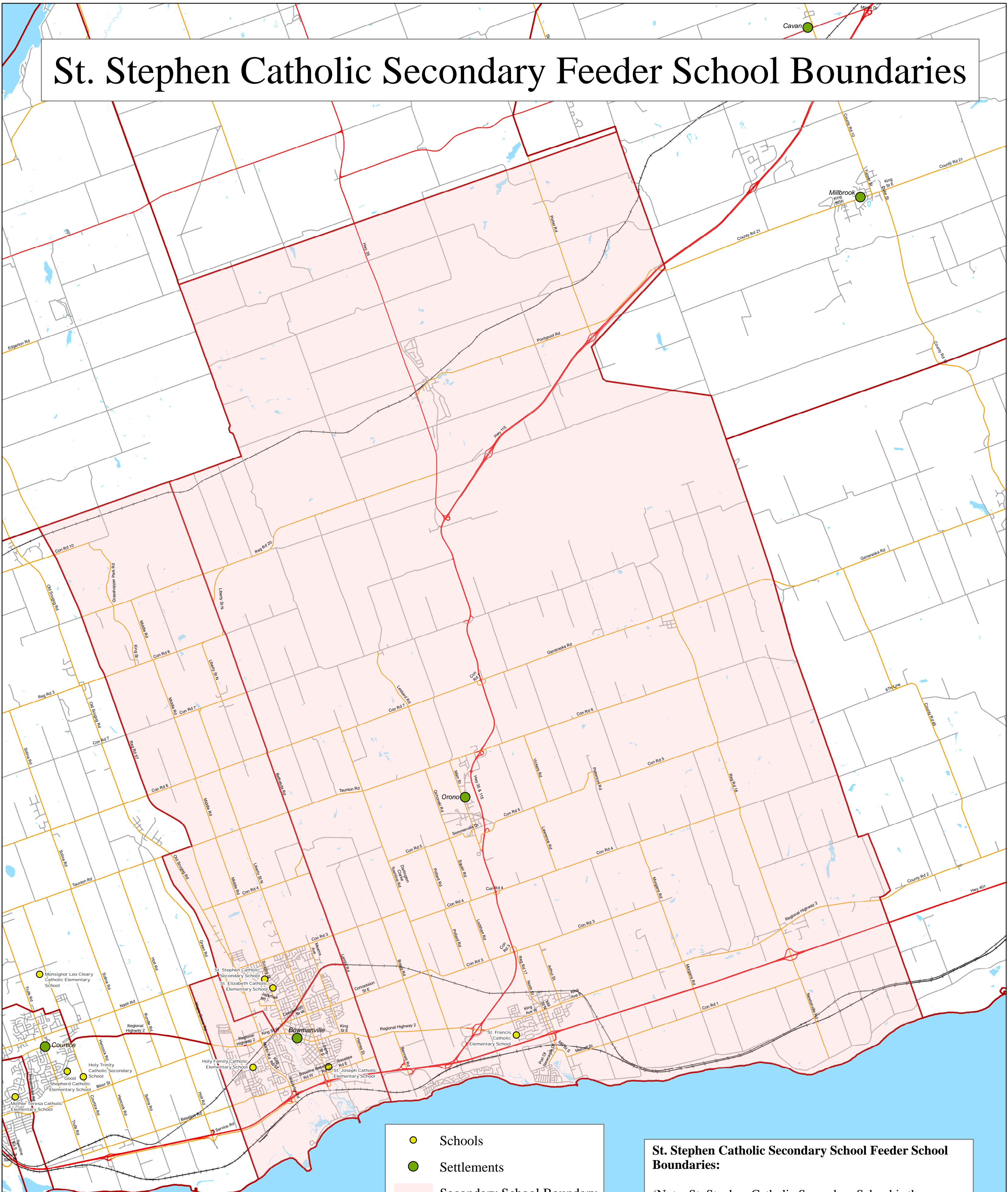


St. Stephen Catholic Secondary Feeder School Boundaries



Disclaimer:
 The Peterborough Victoria Northumberland and Clarington Catholic District School Board (Board) has provided these maps for the convenience of viewers for illustrative purposes only. While the Board makes every reasonable effort to keep information on the maps accurate, the Board cannot guarantee their accuracy or precision. Furthermore, the maps are only updated periodically and may not reflect construction of new streets, boundary changes, etc. These maps should not be used to determine school attendance or transportation eligibility. Please contact the Board Planning Department at 705-748-4861. Under no circumstances shall the Board be held liable for any actions taken, decisions made, or actions not taken from reliance on any information presented in the maps or consequences from any such reliance. This map is produced and owned by the Board and is not to be copied, saved, re-used or re-transmitted by any communication medium by anyone, unless authorized in writing by an officer of the Board. The map was produced by the Board with data supplied under license by Members of the Ontario Geospatial Data Exchange. Her Majesty The Queen in right of Ontario by the Minister of Natural Resources as agent for the Ontario Ministry of Natural Resources.

- Schools
- Settlements
- Secondary School Boundary
- School Boundary
- Highway
- Arterial/Collector
- Local
- Waterbody

St. Stephen Catholic Secondary School Feeder School Boundaries:

(Note: St. Stephen Catholic Secondary School is the Secondary French Immersion Centre for all of Clarington)

St. Francis of Assisi Catholic Elementary School, Newcastle
 St. Elizabeth Catholic Elementary School, Bowmanville

See the appropriate school boundary map for more detail.