



**PETERBOROUGH VICTORIA NORTHUMBERLAND AND
CLARINGTON CATHOLIC DISTRICT SCHOOL BOARD**

ST. MICHAEL CATHOLIC ELEMENTARY SCHOOL

SCHOOL INFORMATION PROFILE

APRIL 30, 2017

Peterborough Victoria Northumberland and Clarington Catholic District School Board

School Information Profile

All of the information contained within the School Information Profile (SIP) relates to the requirements as outlined within the Ministry of Education's Revised Pupil Accommodation Guideline issued March 26, 2015. The following table of contents outlines the areas to be addressed and the relevant page number within the SIP document.

Table of Contents

Section	Item	Pages
1	FACILITY INFORMATION	3-10
1.1	General Information	3
1.2	Site Plan	4
1.2	Site Plan - Assessment of Parking	5
1.3	Aerial Photo	5
1.4	Room Summary from SFIS	6
1.5	Floor Plan(s)	7
1.6	Boundary Map	8
1.7	Official Plan	9
1.8	Zoning Map	10
2	FACILITY CONDITION	11-13
2.1	Facility Index Value	11
2.2	10 Year Renewal History	11
2.3	5 Year Renewal Requirements	12
2.4	School Utility Costs	12
2.5	School Accessibility Measures	13
3	STUDENT DATA	13-15
3.1	Enrolment History (10 year)	13
3.2	Enrolment Projections (10 Year)	14
3.3	Student Proximity Measure	14
3.4	Out of Area Students	14
3.5	Student Transportation Data	15
4	INSTRUCTIONAL DATA	15-17
4.1	Staff Allocation to School	15-16
4.2	Specialized Courses and Programs Offered	16
4.3	Grade Organization	16-17
4.4	Extra-Curricular Activities	17
5	OTHER DATA	17-19
5.1	Non-School Programs and Services	17
5.2	Facility Partnerships at School	18
5.3	Community Use of Schools Data	18
5.4	Child Care	18-19
6	FAITH FORMATION/PARISH INFORMATION	19

SECTION 1 - FACILITY INFORMATION

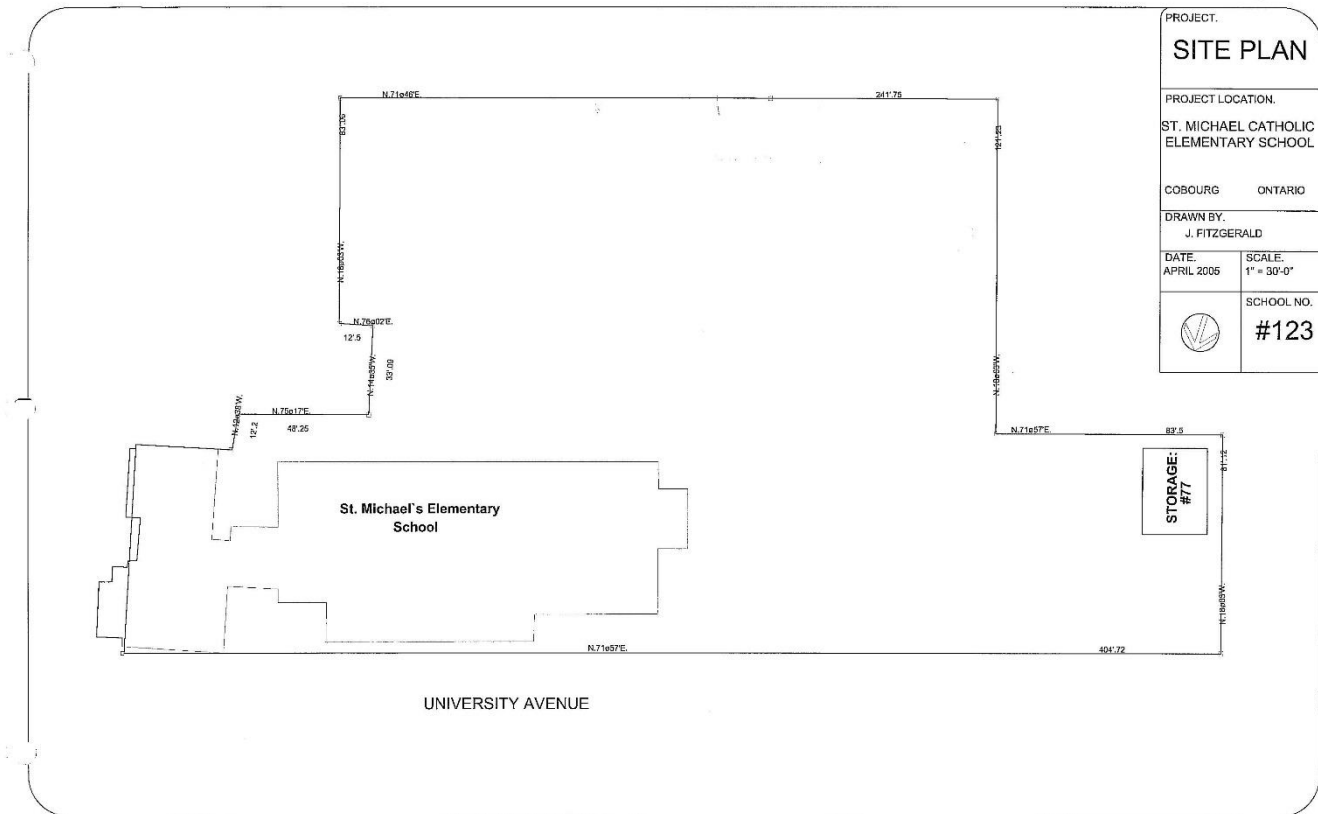
1.1 General Information

The following table provides general information from the School Information Profile for the particular school. Data contained in this table will be replaced with the actual data for each school.

School Name	St. Michael Catholic Elementary School
Address	23 University Avenue West, Cobourg ON
Panel	Elementary
Grades Served	Currently, JK-6 English and French Immersion, moving to K-7 French Immersion only in Sept. 2017 and full K-8 French Immersion for Sept. 2018
Ministry on-the-Ground Capacity (OTG)	248
Current Enrolment as of October 31	216
Current Utilization Rate	87%
Building Area (sq. ft.) (from Integrated Facility Assessment Report)	22,700 sq. ft.
Site Area (Acres)	1.46 acres
Date(s) of Construction	1893, 1905, 1952, 1958
Hard Surface Play Area (sq. ft.)	38,491 sq. ft.
Number of Parking Spaces	0
Number of Portable Classrooms	1 on site, not currently used as a classroom
Child Care on Site	No
Name of Child Care Provider	N/A
Type of Child Care	N/A
Child Care Capacity	N/A
Child Care Enrolment and Ages served	N/A

1.2 Site Plan

The following provides a map showing the school site, the location of the building, the parking areas, driveways, pick-up and drop-off areas for buses and cars, existing portables, outdoor play areas, kindergarten play areas, building entrances, child care entrances, child care centres or licensed discrete space uses.



1.2 Site Plan (Cont'd)

Assessment of Parking

Provide a written assessment of the parking, pick-up and drop-off areas as outlined on the site plan above, and any required improvements or studies that should be undertaken to improve the site.

There is no parking on site. The Church uses the hard surface playground area for Church events.

1.3 Aerial Photo

The following provides an aerial photo showing the school site, the property outline of the school and adjacent land uses.



Imagery ©2017 Google, Map data ©2017 Google 20 m

1.4 Room Summary from SFIS

The following is a sample room loading template which is provided for the purposes of illustration. The actual template will be submitted for each affected school.

Date: July 18, 2016

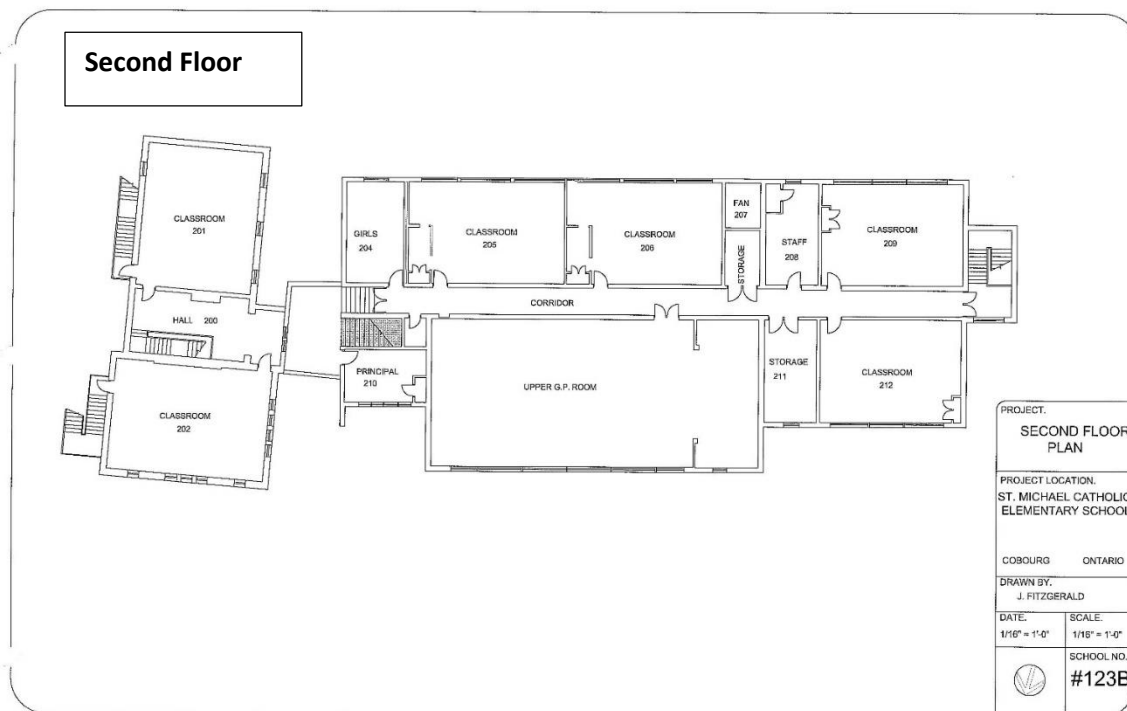
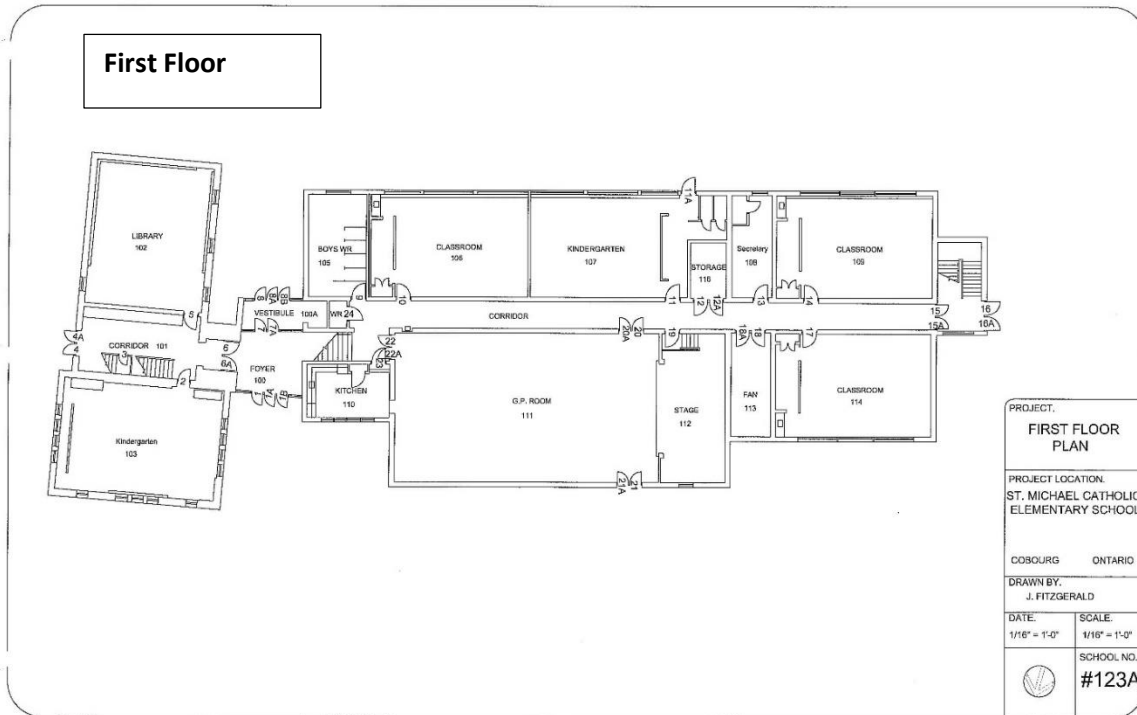
SFIS ID and Name: 9264

Room Number	Space Type	Current Use	Loading	Loading FC	Comments
202	Classroom	Classroom	23.0000	23.0000	
201	Classroom	Classroom	23.0000	23.0000	
205	Classroom	Classroom	23.0000	23.0000	
206	Classroom	Classroom	23.0000	23.0000	
106	Kindergarten	Jr/Sr Kindergarten	26.0000	26.0000	
209	Classroom	Classroom	23.0000	23.0000	
212	Classroom	Classroom	23.0000	23.0000	
114	Classroom	Classroom	23.0000	23.0000	
111	General Purpose Room	General Purpose Room	0.0000	0.0000	
103	Kindergarten	Jr/Sr. Kindergarten	26.0000	26.0000	
107	Kindergarten	Jr/Sr. Kindergarten	26.0000	26.0000	
102	Library Res. Centre	Library Resource	0.0000	0.0000	
109	Classroom	Classroom	23.0000	23.0000	
208	Staff Work Room/Lounge	Staff Work Room/Lounge	0.0000	0.0000	
		OTG	262.0		

The OTG provided above differs slightly from the figures used in the Initial Staff Report. In preparing this Room Summary data, a correction was made to the description of two rooms, thereby changing the OTG to match those reported in Ministry School Facilities Inventory System (SFIS).

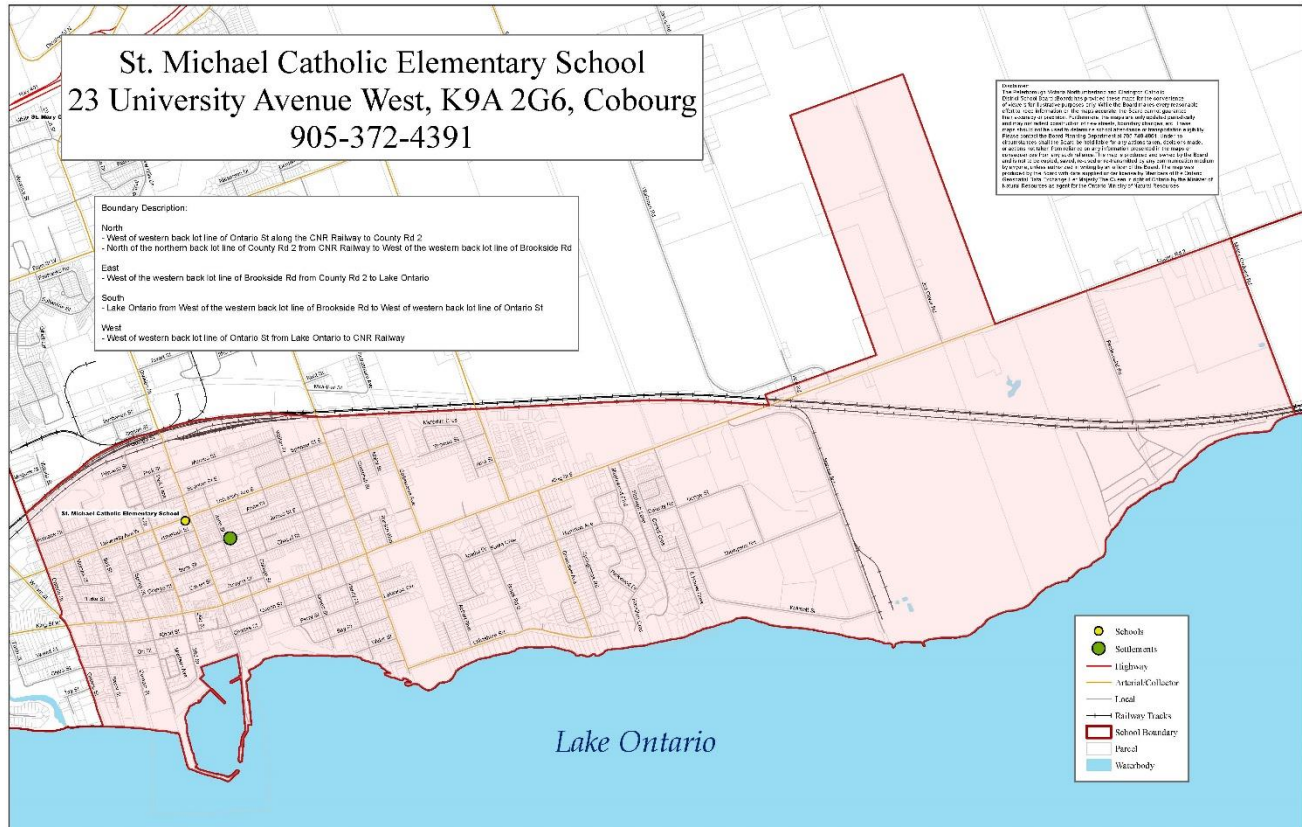
1.5 Floor Plan(s)

The following provides a school floor plan for each floor of the school.



1.6 Boundary Map

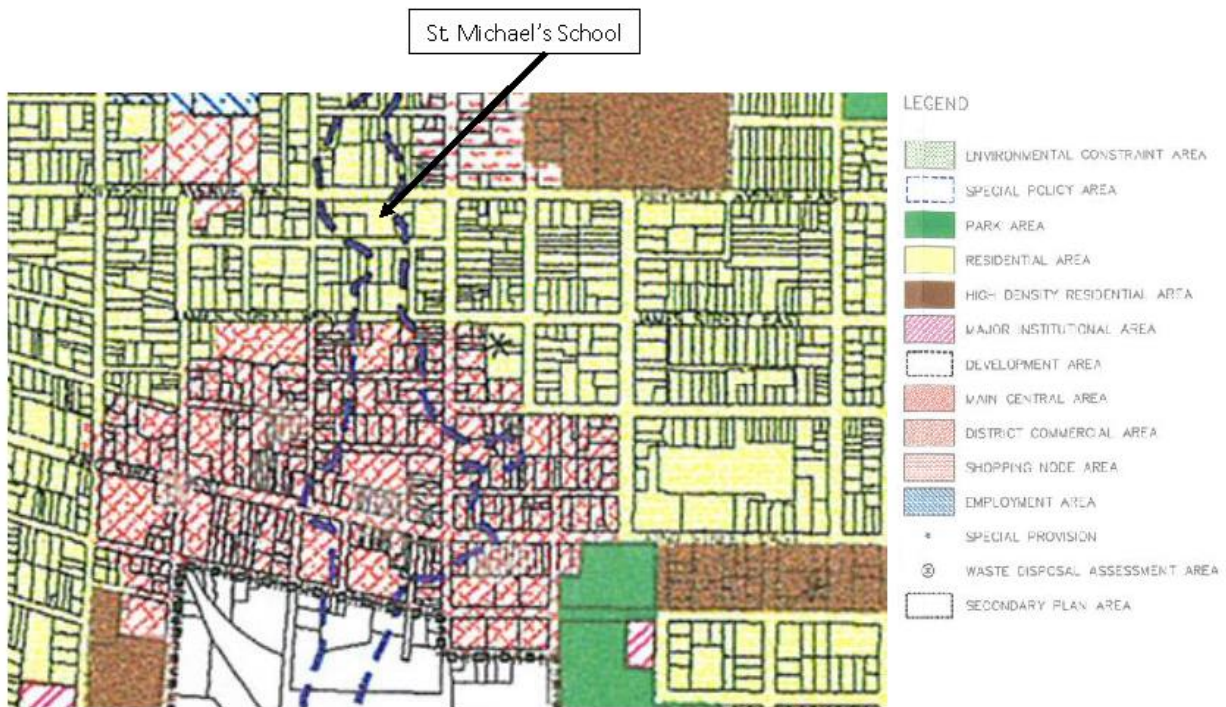
The following provides a map showing the school location and the boundary for the school for each program. Where a school serves both a regular tract and French program, the regular tract boundary will be on the first page and the French program boundary(s) will be shown on subsequent pages.



1.7 Official Plan

The following provides a map showing the school site, the current official plan or secondary plan designation from the municipality for the school site and adjacent lands. The official plan description is added below the map or on an adjacent page.

Town of Cobourg Official Plan (2002) Land Use Designation: Residential Area and Special Policy Area



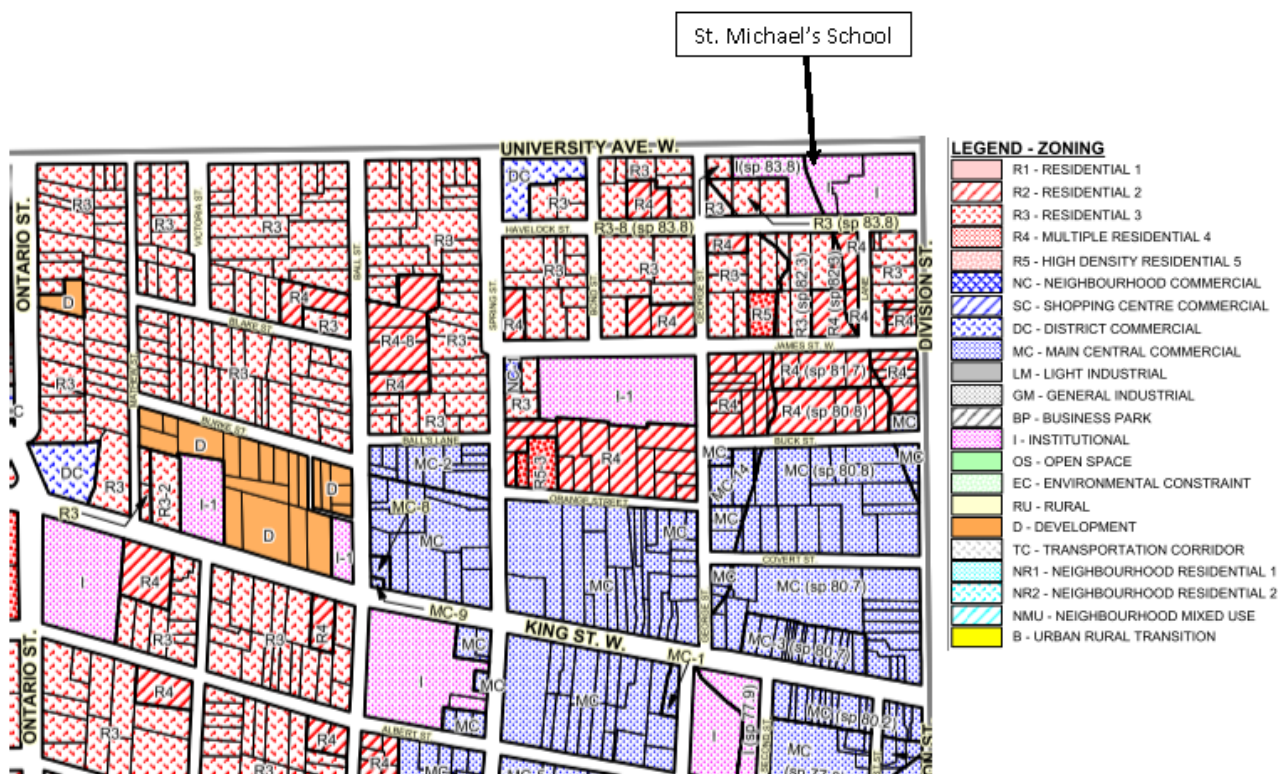
Excerpted from Town of Cobourg Official Plan (2002), Schedule A, Land Use Plan

1.8 Zoning Map

The following provides a map showing the school site, the current zoning from the municipality for the school site and adjacent lands, and any dual or underlying zoning on the property. The zone description is added below the map or on an adjacent page.

St. Michael's School, Cobourg

Town of Cobourg Comprehensive Zoning By-law #85-2003: Institutional (I) Zone, and Institutional Special Policy 83.8 (I sp. 83.8) Zone



Excerpted from Zoning By-law #85-2003, Schedule A, Map #2

SECTION 2 - FACILITY CONDITION

2.1 Facility Index Value

The Facility Condition Index (FCI) is the building condition as determined by the Ministry of Education by calculating the five-year renewal needs and the replacement value for each facility.

School Name	St. Michael Catholic Elementary School
Replacement Value (A)	\$5,973,252
5 Year Renewal Needs (B) per Ministry 2013 inspection and limited scope	\$1,388,139
10 Year Renewal Needs based on expanded assessment and program scope (C)	\$7,552,548
Facility Condition Index (B) / (A) per Ministry	23%
Integrated Facility Assessment (C) / (A)	126.54 %

2.2 10 Year Renewal History

The 10 year renewal history lists those major repairs at the school which are captured by the TCPS data base. The summary includes the year undertaken, the specific renewal item (e.g., Roof Replacement), the value of that repair and a cumulative value of all repairs undertaken within the 10 year time frame. The table excludes routine maintenance and other items not considered as renewal under the Tangible Capital Assets guide.

Year	Renewal Item	Cost	Cumulative Cost
2010-11	Roof Replacement	\$138,910	\$138,910
2010-11	Minor repairs	\$6,872	\$145,782
2011-12	General repairs	\$20,757	\$166,539
2012-13	Ceiling and lighting	\$42,387	\$208,926
2012-13	Flooring and stair treads	\$22,874	\$231,800
2012-13	Painting	\$1,941	\$233,741
2012-13	Retrofit for full-day kindergarten	\$244,160	\$477,901
2013-14	Assisted Listening devices	\$21,862	\$499,763
2013-14	Aluminum soffits	\$15,337	\$515,100
2014-15	Assisted Listening devices	\$17,960	\$533,060
2014-15	Minor flooring	\$12,427	\$545,487
2015-16	Washroom renovations	\$26,528	\$572,015
2015-16	Flooring	\$10,181	\$582,196
2015-16	Window upgrades	\$136,355	\$718,551
2015-16	Electrical upgrades	\$27,716	\$746,267
2015-16	Access points	\$8,338	\$754,605
	Total	\$754,605	

2.3 5 Year Renewal Requirements

The 5 year renewal requirements lists those major repairs which are captured by the TCPS data base and listed by priority. The summary includes the year to be undertaken, the specific renewal item (e.g., Roof Replacement), the value of that repair and a cumulative value of all proposed renewal projects.

Year	Renewal Item	Priority	Cost	Cumulative Cost
2016	Cupboards, plumbing		\$1,305,037	\$1,305,037
2018	Ceilings, stairs		\$809,000	\$2,114,037
2020	Public Address System		\$34,000	\$2,148,037
	Total		2,148,037	

2.4 School Utility Costs

The utility cost data will be reported for the last complete year available and includes the costs for Natural Gas, Water, and Electricity as billed by the local utility. The total cost represents the cost for the year including the costs for portables or other licensed or leased facilities within the school (i.e., child care centre).

Utility Costs for Year	
Natural Gas	\$7,971
Water	\$3,286
Hydro	\$12,501
Total	\$23,758
Building Area – Permanent (A)	21,560 sq. ft.
Building Area – Non Permanent (B)	Not used as a classroom
Total Building Area (A+B)	21,560 sq. ft.
Cost per square foot	\$1.10 sq. ft.

Notes on Utility Costs

The square footage figures differ slightly from the Building Area reported in the Initial Staff Report. The figures used are those reported in Ministry School Facilities Inventory System (SFIS).

2.5 School Accessibility Measures

The school accessibility measure represents the current accessibility inventory for the school as calculated by the Facilities Services Department.

School Name	St. Michael Catholic Elementary School
Number of Storeys	2
Accessible Entrance	Yes
Door Operator	
Front	No
Other	No
Lift Device	
Elevator	No
Stage Lift	No
Other Lift	No
Barrier Free Washroom	No
Accessibility to Instructional Area	No

Notes on Accessibility

School is not wheelchair accessible from floor to floor.
--

SECTION 3 – STUDENT DATA

3.1 Enrolment History (10 Year)

The historical enrolment is provided on a grade by grade basis for the last 10 years including the current year as of October 31 of the year. Any changes to grade configuration or programming will be noted below the table along with an explanation of the phasing in of the decision(s).

Year	JK	SK	1	2	3	4	5	6	BH	RT/FI	Total	Utilization
2007	18	25	20	24	29	23	17	25		75/106	181	69.1%
2008	25	24	27	22	19	27	25	15	6	86/104	190	72.5%
2009	30	39	27	28	23	22	26	26	4	105/120	225	85.9%
2010	28	31	39	23	25	22	22	27	2	95/124	219	83.6%
2011	25	32	28	37	24	20	20	19		91/114	205	78%
2012	34	23	28	25	36	21	19	15		97/104	201	77%
2013	31	38	29	28	24	32	19	18		85/134	219	84%
2014	26	31	34	30	28	23	28	15		62/153	215	82%
2015	37	33	33	33	23	25	23	28		64/171	235	90%
2016	19	42	27	28	34	24	20	21		48/162	215	82%

Utilization uses current value of 262 regardless of OTG in the past.

3.2 Enrolment Projections (10 Year)

The projected enrolment is provided on a grade by grade basis for the next 10 years (excluding the current year) for the school. This projected enrolment was prepared prior to the changes that were approved in 2016-17 regarding French Immersion and movement of Regular Track Students to St. Joseph CES, and differ from those used in the Initial Staff Report for the analysis of options and future utilization.

Year	JK	SK	1	2	3	4	5	6	Total	Utilization
2017-18	26	21	43	26	27	31	24	19	217	82.80%
2018-19	26	29	21	42	26	25	30	22	221	84.30%
2019-20	27	30	29	21	41	23	24	29	224	85.40%
2020-21	27	30	30	28	20	37	23	23	218	83.20%
2021-22	28	31	30	29	27	18	36	22	221	84.30%
2022-23	28	31	31	29	28	25	18	34	224	85.50%
2023-24	28	31	31	30	29	26	24	17	216	82.40%
2024-25	29	32	31	30	29	26	25	23	225	85.80%
2025-26	29	32	32	31	29	27	26	24	230	87.70%
2026-27	29	32	32	31	30	27	26	24	231	88.20%

3.3 Student Proximity Measure

Student proximity measures the distance from the student's home address to the school using straight line distance. The data is aggregated by grade division and expressed as both a total number of students and as a percentage of the current year enrolment based on March 27, 2017.

Division	<1000 meters	1000-1600 meters	1600-3200 meters	>3200 meters
Primary JK-3	42	12	31	65
Junior 4-6	13	8	15	29
Total Students	55	20	46	94
% of Total	25.6%	9.3%	21.3%	43.7%

Average Distance to School in Kilometers – Not Available	kms
--	-----

3.4 Out of Area Students

Out of Area students are calculated using the home address of the student as compared to the current school boundary.

Division	In Area Students	Out of Area Students	% Out of Area
Primary JK-3	133	2	1.5%
Junior 4-6	52	3	5.7%
Total Students	185	5	2.63%

Out of Area Students based on data from March 27, 2017

3.5 Student Transportation Data

Student transportation data is calculated for the current year as of March 27, 2017. The students entitled to transportation are those identified by DSTS by virtue of distance to school, by identified impediments to safe access to school (i.e., road conditions) or by identification from student services.

Division	Entitled to Transportation	Not Entitled to Transportation	% Not Entitled to Transportation
Primary JK-3	96	39	28.8%
Junior 4-6	44	11	20%
Total Students	140	50	26.3%

For Transported Students	
Shortest Bus Ride (in minutes)	2 minutes
Longest Bus Ride (in minutes)	67 minutes
Average Bus Ride (in minutes)	21 minutes

Student Transportation Data based on data from March 27, 2017

SECTION 4 – INSTRUCTIONAL DATA

4.1 Staff Allocation to School

The staff allocation to school includes the current year teaching and non-teaching staff allocation to the school. The staff values are expressed to two decimal places.

Teaching Staff Allocation	Number
Classroom Teachers	11
Program Support	1.5
Integrated Arts (JK-3)	.5
FSL (4-8)	.17
Extra Prep Time	
SERT	.5
Library	
Principal	1.0
Vice-Principal	
ECE	
Total	14.67

Non-Teaching Staff Allocation	Number
Secretary	1.0
EA's	3.0
Custodians	1.38
ECE	2.0
Library support	.46
Total	7.84

Total Staff	22.51
--------------------	--------------

4.2 Specialized Courses and Programs Offered

Please indicate if the school has any of the following programs and the grades served by these programs. If the program is not listed here, please insert a line and add the program.

Programs	Yes/No	Grades
French Immersion	Yes	JK-6 in 2016-17, expanding to JK-8 for 2018-19
Extended French	No	
Early Intervention Program	No	
Transition Program	No	

4.3 Grade Organization (Elementary) at October 31, 2016

For the elementary school please indicate the number of students by grade and the organization for each class using the data from the Staffing Plus system. The teacher's names should not appear. Where schools have a French program, please indicate the staffing and class composition for this as well.

Teacher	Staff RTE	Program	JK ELKP	SK ELKP	1	2	3	4	5	6	Total
A	1.0	RT	4	10	5						19
B		RT				5	9				14
C		RT						7	9	4	20
D		FI	6	17							23
F		FI	9	15							24
G		FI			18						18
H		FI			4	14					18
I		FI				9	10				19
J							15	8			23
K								9	11		20
L										17	17
Total			19	42	27	28	34	24	20	21	215

Number of Classes	11
Number of Combined Classes	9
% of Combined Classes	82%

4.4 Extra-Curricular Activities

Provide a list of all extra-curricular activities including athletic teams, clubs, performing arts, community outreach and other school sponsored events that have been run within the last year. For each activity indicate the number of participants or teams.

Extra-Curricular Activity	Participants
Cross-Country Running	Grades 3-6
Junior Soccer – Boys and Girls	Grades 4-6
Lego club	All students
Chess club	Grades 1-6
Dance club	Grades 1-6
Christmas Concert	All Students - 207
Track and Field Events	Grade 4 to 6
Talent Show	25
Co-Ed Junior Baseball	4-6
Talent Show	K-6
Floor Hockey	Junior
Choir	Grades 1 -- 6

SECTION 5 – OTHER DATA

5.1 Non-School Programs and Services

This section describes the current non-school programs or services at the school as well as any revenue from these non-school programs or services.

Program or user Group	Room(s) Used	Revenue From Current Year	Cost Recovery
Not applicable			

5.2 Facility Partnerships at School

This section describes the current facility partnerships located at the school as defined by the Community Planning and Partnership Guidelines as well as the revenue received from these partners.

Facility Partner	Room(s) Used	Revenue From Current Year	Cost Recovery
Not applicable			

5.3 Community Use of Schools Data

Provide the details for the Community Use of Schools for the current year including all permits up to the end of June that are in the current system. Indicate the category from the Community Use of Schools procedure, the number of hours used annually by the group and the days of the week that the permit user operates on.

Community Use Group	Category	Hours Used Annually	Days Used
St. Michael's Church 2015/16	Parish use	Approx. 500 hours	Various days
St. Michael's Church 2016/17	Parish use	Approx. 2900 hours	Various days

Notes

Limited use of school: primarily related to activities associated with St. Michael's Church, which is located next door.

5.4 Childcare

Please provide details regarding the Child Care programs at the school which are licensed under the Day Nursery Act. This information will include the Child Care Operator, the licensed program capacity and the current number of children enrolled.

Child Care Operator		
Program	Licensed Capacity	Current Enrollment
Infant	Not applicable	
Toddler	Not applicable	
Pre-School	Not applicable	
Nursery School	Not applicable	
School Aged	Not applicable	

Please indicate the square footage of the discrete space child care and the shared space child care areas as indicated on the child care license for the current year.

Licensed Spaces at School	
Discrete Space Area	Not applicable
Shared Space Area	Not applicable
Number of Rooms	Not applicable
Annual Revenue Received from Child Care	Not applicable

All Child Care centres are run on a cost recovery basis and are operated as not-for-profit entities.

SECTION 6 – FAITH FORMATION/PARISH INFORMATION

Provide information regarding the breadth of the faith formation programs available at the school and all programs run in conjunction with the parish on an annual basis in the current year.

Faith Formation Programs	
Religion and Family Life Programs	JK – Grade 6
Sacramental Programs	Grade 2
Catholic Social Teachings	JK – Grade 6
Liturgical Celebrations	Mass at the Church 4 times Lent and Advent Liturgies
Involvement with Parish	Regular Communication/Regular Visits from Parish Priests/Retreats for Students in Sacramental Preparation
Catholic Graduate Expectations	JK – Grade 6 lessons in class
Associated Parishes	St. Michael of the Archangel Parish, Cobourg
Distance to Parish	Adjacent to the school

Programs run in conjunction with Parish	Occurrence
Sacramental Preparation for First Eucharist	4 Sessions at Church Lessons as part of Religion Program in Grade 2
Sacramental Preparation for First Reconciliation	4 Sessions at Church Lessons as part of Religion Program in Grade 2