



**PETERBOROUGH VICTORIA NORTHUMBERLAND AND
CLARINGTON CATHOLIC DISTRICT SCHOOL BOARD**

ST. JOSEPH CATHOLIC ELEMENTARY SCHOOL, COBOURG

SCHOOL INFORMATION PROFILE

APRIL 30, 2017

**Peterborough Victoria Northumberland and Clarington
Catholic District School Board**

School Information Profile

All of the information contained within the School Information Profile (SIP) relates to the requirements as outlined within the Ministry of Education's Revised Pupil Accommodation Guideline issued March 26, 2015. The following table of contents outlines the areas to be addressed and the relevant page number within the SIP document.

Table of Contents

Section	Item	Pages
1	FACILITY INFORMATION	3-10
1.1	General Information	3
1.2	Site Plan	4
1.2	Site Plan - Assessment of Parking	5
1.3	Aerial Photo	5
1.4	Room Summary from SFIS	6
1.5	Floor Plan	7
1.6	Boundary Map	8
1.7	Official Plan	9
1.8	Zoning Map	10
2	FACILITY CONDITION	11-13
2.1	Facility Index Value	11
2.2	10 Year Renewal History	11
2.3	5 Year Renewal Requirements	12
2.4	School Utility Costs	12
2.5	School Accessibility Measures	13
3	STUDENT DATA	13-15
3.1	Enrolment History (5 year)	13
3.2	Enrolment Projections (10 Year)	14
3.3	Student Proximity Measure	14
3.4	Out of Area Students	15
3.5	Student Transportation Data	15
4	INSTRUCTIONAL DATA	16-17
4.1	Staff Allocation to School	16
4.2	Specialized Courses and Programs Offered	16
4.3	Grade Organization (Elementary)	17
4.4	Extra-Curricular Activities	17
5	OTHER DATA	18-19
5.1	Non-School Programs and Services	18
5.2	Facility Partnerships at School	18
5.3	Community Use of Schools Data	18
5.4	Child Care	19
6	FAITH FORMATION/PARISH INFORMATION	19-20

SECTION 1 - FACILITY INFORMATION

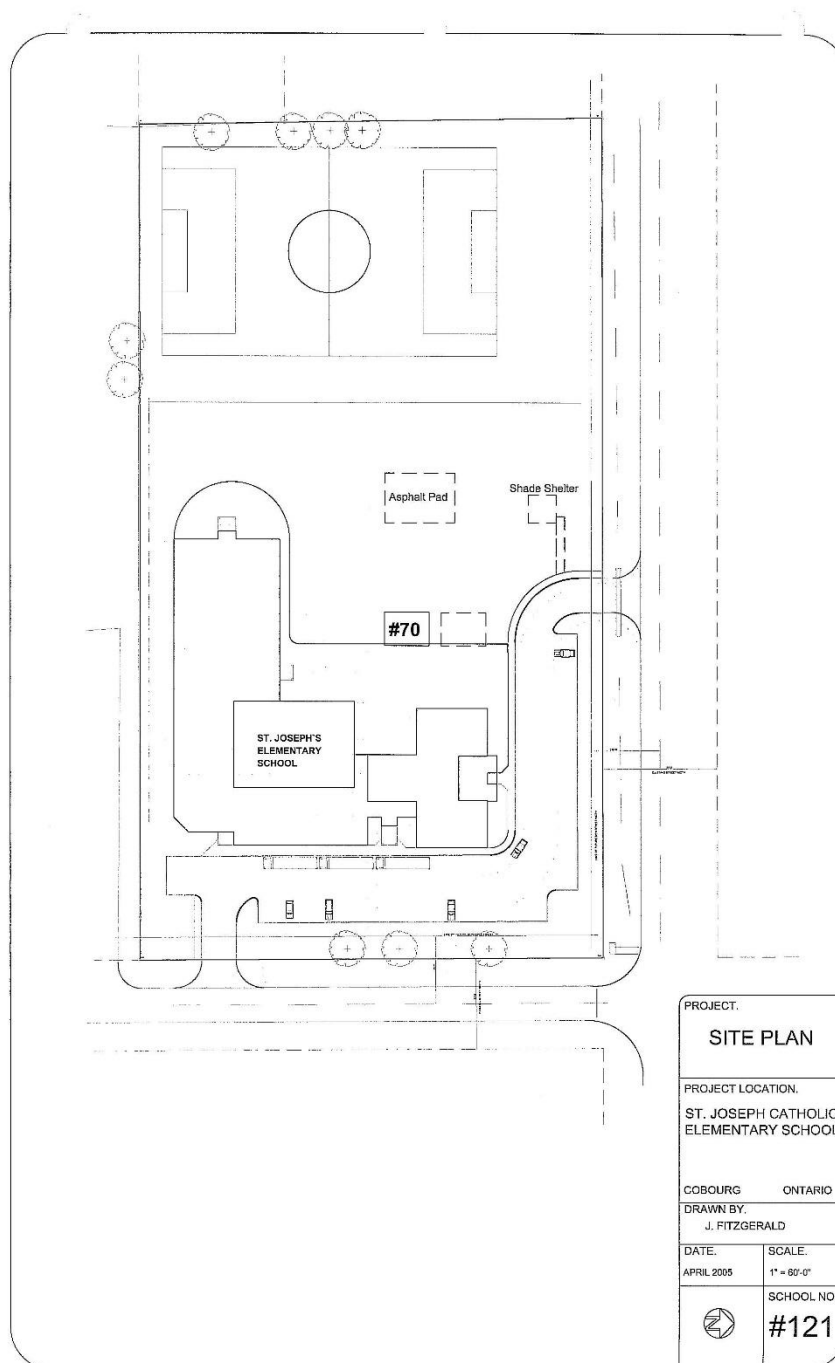
1.1 General Information

The following table provides general information from the School Information Profile for the particular school. Data contained in this table will be replaced with the actual data for each school.

School Name	St. Joseph Catholic Elementary School, Cobourg
Address	919 D'Arcy Street North, Cobourg ON
Panel	Elementary
Grades Served	JK-8
Ministry on-the-Ground Capacity (OTG)	277
Current Enrolment as of October 31	140
Current Utilization Rate	50.5%
Building Area (sq. ft.)	29,342 sq. ft.
Site Area (Acres)	4.62 acres
Date(s) of Construction	1960 Original 20%, 1991 Addition 80%
Hard Surface Play Area (sq. ft.)	7,640 sq. ft.
Number of Parking Spaces	42 (including 2 handicap)
Number of Portable Classrooms	1 on site: not used as a classroom
Child Care on Site	Yes
Name of Child Care Provider	Northumberland YMCA
Type of Child Care	Before and After school program
Child Care Capacity	Current Licensed capacity by age group: 26
Child Care Enrolment and Ages served	Serves children 68 months to 13 years.

1.2 Site Plan

The following provides a map showing the school site, the location of the building, the parking areas, driveways, pick-up and drop-off areas for buses and cars, existing portables, outdoor play areas, kindergarten play areas, building entrances, child care entrances, child care centres or licensed discrete space uses.



1.2 Site Plan (Cont'd)

Assessment of Parking

Provide a written assessment of the parking, pick-up and drop-off areas as outlined on the site plan above, and any required improvements or studies that should be undertaken to improve the site.

Parking is adequate, however it does lack an in/out for buses.

1.3 Aerial Photo

The following provides an aerial photo showing the school site, the property outline of the school and adjacent land uses.



1.4 Room Summary from SFIS

The following is a sample room loading template which is provided for the purposes of illustration. The actual template will be submitted for each affected school.

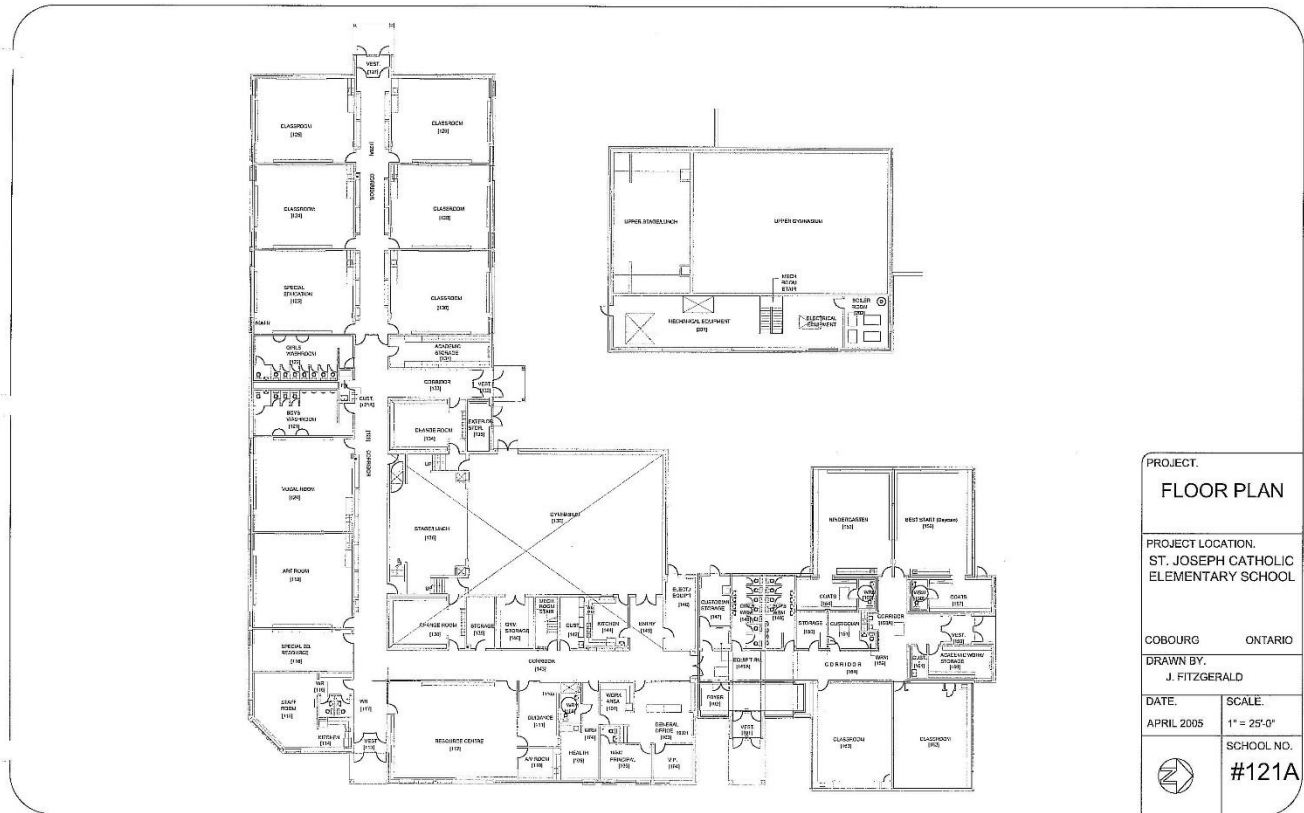
Date: Jul 18, 2016

SFIS ID and Name: 9262

Room Number	Space Type	Current Use	Loading		Comments
119	Classroom	Classroom	23.0000		
156	Classroom	Classroom	0.0000		Best Start
123	Classroom	Classroom	23.0000		
130	Classroom	Classroom	23.0000		
128	Classroom	Classroom	23.0000		
129	Classroom	Classroom	23.0000		
163	Classroom	Classroom	23.0000		
162	Classroom	Classroom	23.0000		
125	Classroom	Classroom	23.0000		
124	Classroom	Classroom	23.0000		
137	General Purpose Room	General Purpose Room	0.0000		
153	Kindergarten	Jr/Sr. Kindergarten	26.0000		
112	Library Res. Centre	Library Resource	0.0000		
120	Classroom	Classroom	23.0000		
118	Seminar Room	Resource – General	12.0000		
123	Special Education	Special Education	9.0000		
115	Staff Work Room/Lounge	Staff Work Room/Lounge	0.0000		
		OTG	277.0		

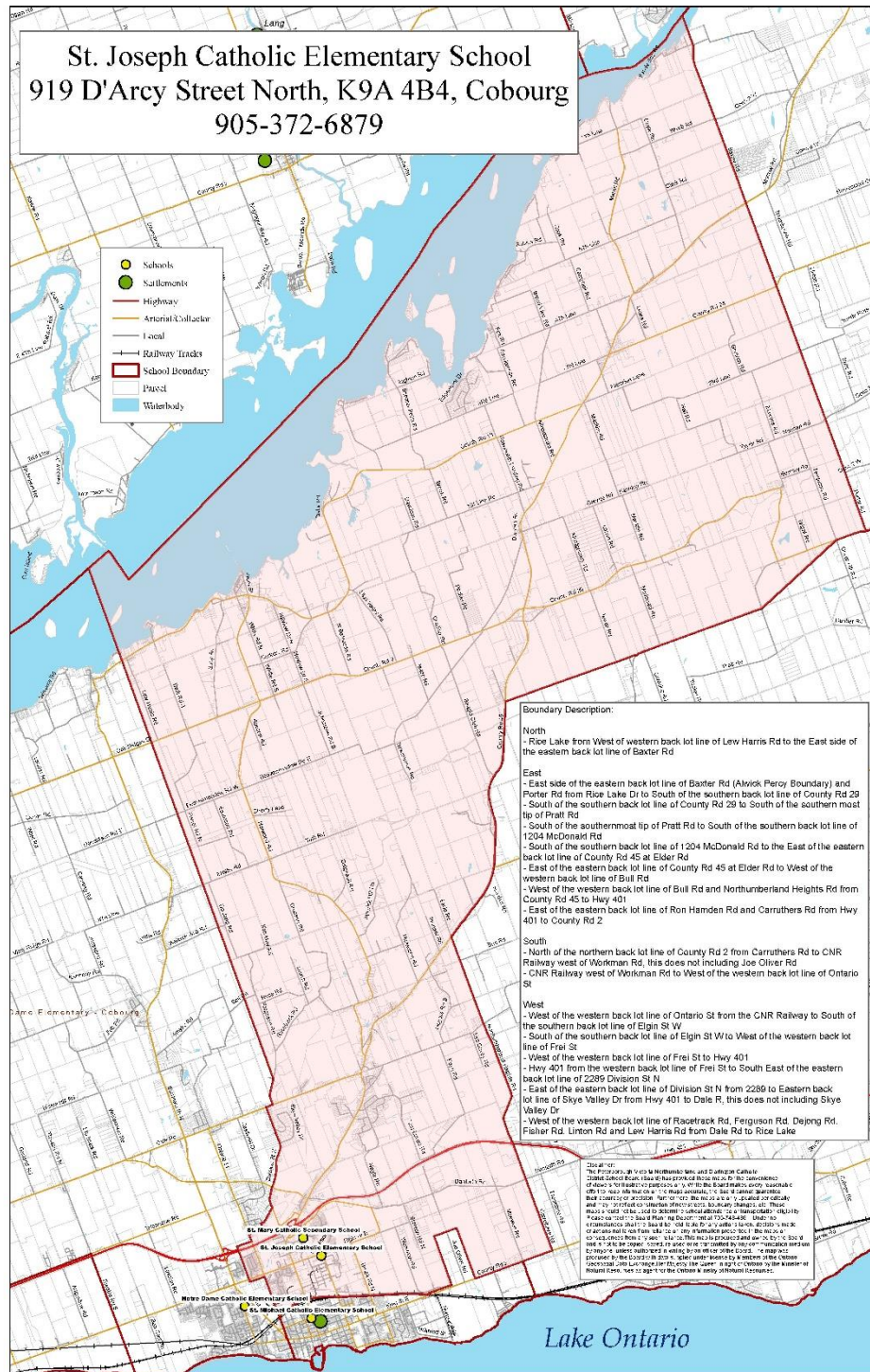
1.5 Floor Plan

The following provides a school floor plan for each floor of the school. Where a school has two or more floors, the first floor will be on the first page, the second floor on the second, etc.



1.6 Boundary Map

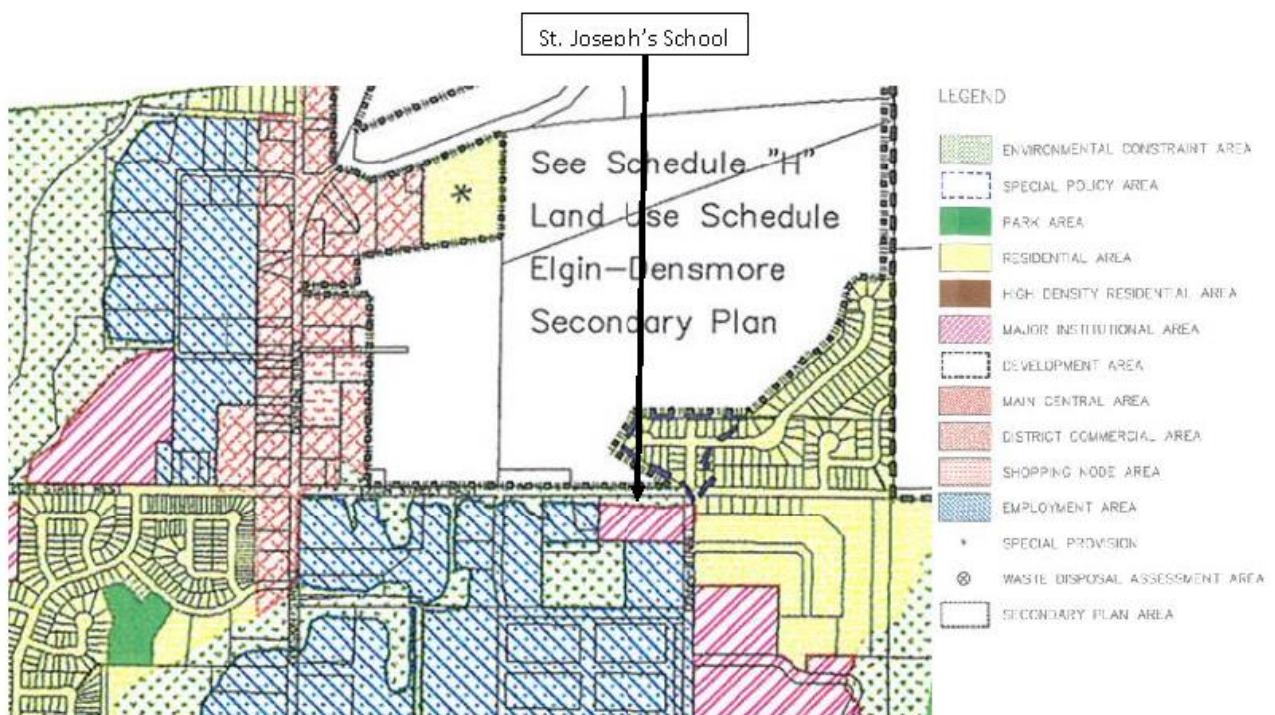
The following provides a map showing the school location and the boundary for the school for each program. Where a school serves both a regular tract and French program, the regular tract boundary will be on the first page and the French program boundary(s) will be shown on subsequent pages.



1.7 Official Plan

The following provides a map showing the school site, the current official plan or secondary plan designation from the municipality for the school site and adjacent lands. The official plan description is added below the map or on an adjacent page.

Town of Cobourg Official Plan (2002) Land Use Designation: Major Institutional Area and Environmental Constraint Area



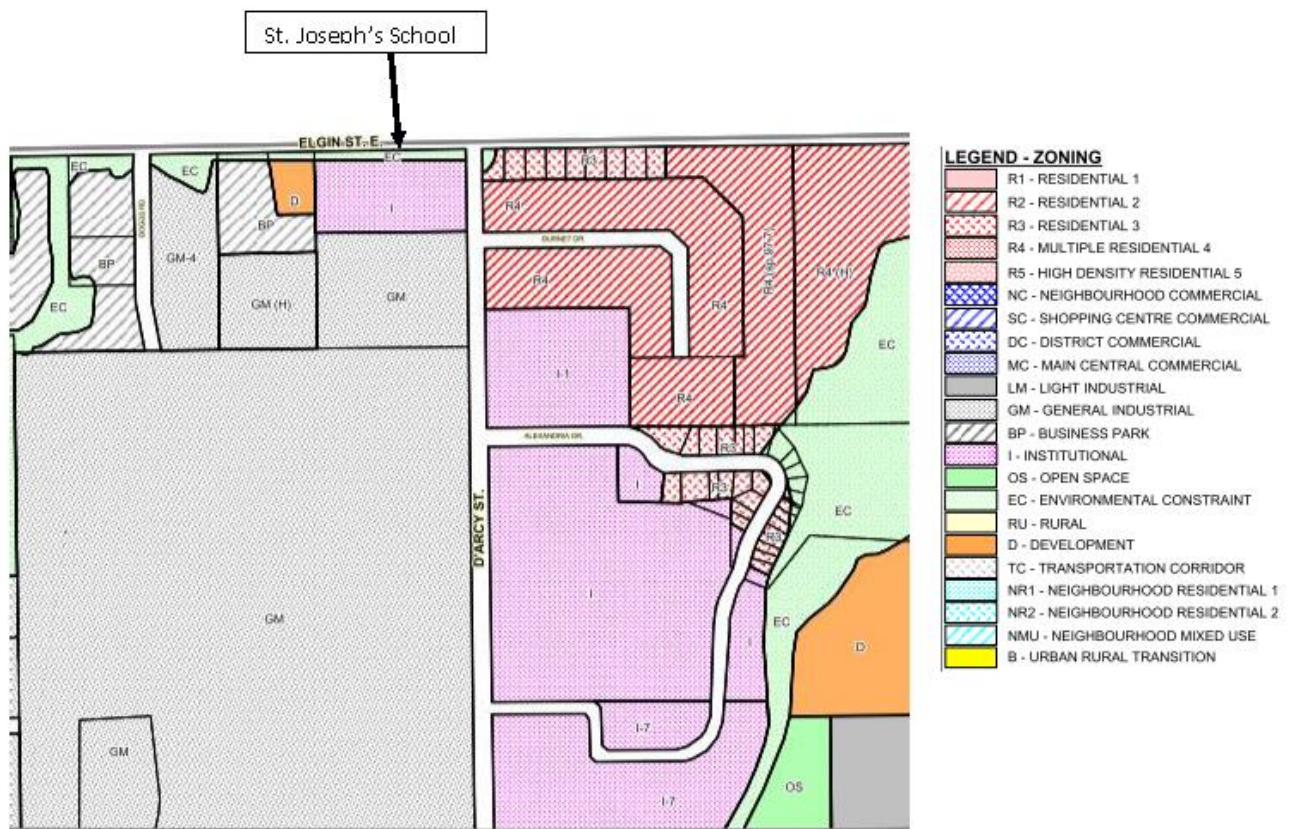
Excerpted from Town of Cobourg Official Plan (2002), Schedule A, Land Use Plan

1.8 Zoning Map

The following provides a map showing the school site, the current zoning from the municipality for the school site and adjacent lands, and any dual or underlying zoning on the property. The zone description is added below the map or on an adjacent page.

St. Joseph's School, Cobourg

Town of Cobourg Comprehensive Zoning By-law #85-2003: Institutional (I) Zone and Environmental Constraint (EC) Zone



Excerpted from Zoning By-law #85-2003, Schedule A, Map # 10

SECTION 2 - FACILITY CONDITION

2.1 Facility Index Value

The Facility Condition Index (FCI) is the building condition as determined by the Ministry of Education by calculating the five-year renewal needs and the replacement value for each facility. These values were determined by a report completed in 2013.

School Name	St. Joseph Catholic Elementary School, Cobourg
Replacement Value (A)	\$6,035,385
5 Year Renewal Needs (B)	\$784,600
Facility Condition Index	13% (B) / (A)

2.2 10 Year Renewal History

The 10 year renewal history lists those major repairs at the school which are captured by the TCPS data base. The summary includes the year undertaken, the specific renewal item (e.g., Roof Replacement), the value of that repair and a cumulative value of all repairs undertaken within the 10 year time frame. The table excludes routine maintenance and other items not considered as renewal under the Tangible Capital Assets guide.

Year	Renewal Item	Cost	Cumulative Cost
2010-11	Energy Management System	\$54,032	\$54,032
2010-11	Assisted Listening Devices	\$11,452	\$65,484
2011-12	Gym Wall Padding	\$7,141	\$72,625
2012-13	Lighting	\$70,487	\$143,112
2012-13	Painting	\$9,705	\$152,817
2013-14	Assisted Listening Devices	\$15,201	\$168,018
2013-14	Minor flooring	\$9,858	\$177,876
2015-16	Washroom upgrade	\$13,866	\$191,742
2015-16	Access points	\$8,338	\$200,080
	Total	\$200,080	

2.3 5 Year Renewal Requirements

The 5 year renewal requirements lists those major repairs which are captured by the TCPS data base and the Facilities Services department, and listed by priority. The summary includes the year to be undertaken, the specific renewal item (e.g., Roof Replacement), the value of that repair and a cumulative value of all proposed renewal projects.

Year	Renewal Item	Priority	Cost	Cumulative Cost
2016	Ceilings, exterior doors		\$827,000	\$827,000
2017	Site work, washrooms		\$56,000	\$883,000
2018	Controls, plumbing fixtures		\$548,000	\$1,431,000
2019	Roof		\$491,000	\$1,922,000
2021	Lighting		\$301,000	\$2,223,000
	Total		\$2,223,000	

2.4 School Utility Costs

The utility cost data will be reported for the last complete year available and includes the costs for Natural Gas, Water, and Electricity as billed by the local utility. The total cost represents the cost for the year including the costs for portables or other licensed or leased facilities within the school (i.e., child care centre).

Utility Costs for Year	
Natural Gas	\$8,383
Water	\$4,013
Hydro	\$24,354
Total	\$36,750
Building Area – Permanent (A)	29,342 sq. ft.
Building Area – Non Permanent (B)	800 sq. ft.
Total Building Area (A+B)	30,142 sq. ft.
Cost per square foot	\$1.21

2.5 School Accessibility Measures

The school accessibility measure represents the current accessibility inventory for the school as calculated by the Facilities Services Department.

School Name	St. Joseph Catholic Elementary School, Cobourg
Number of Storeys	1
Accessible Entrance	Yes
Door Operator	
Front	Yes
Other	No
Lift Device	
Elevator	N/A
Stage Lift	Yes
Other Lift	
Barrier Free Washroom	Yes
Accessibility to Instructional Area	Yes

Notes on Accessibility

--

SECTION 3 – STUDENT DATA

3.1 Enrolment History (10 Year)

The historical enrolment is provided on a grade by grade basis for the last 10 years including the current year as of October 31 of the year. Any changes to grade configuration or programming will be noted below the table along with an explanation of the phasing in of the decision(s).

Year	JK	SK	1	2	3	4	5	6	7	8	CASA	Total	Utilization
2007	19	16	17	15	21	15	27	32	17	39	0	218	78.7%
2008	19	17	18	16	14	21	13	27	40	19	0	204	73.6%
2009	25	9	20	17	19	14	24	15	30	39	1	213	76.9%
2010	17	24	13	16	19	18	15	22	22	29	5	200	72.2%
2011	17	22	22	13	12	19	17	14	30	18	6	190	68.6%
2012	20	15	20	20	8	14	20	18	14	33	5	187	67.5%
2013	15	15	10	17	19	9	11	21	20	15	6	158	57.0%
2014	13	13	14	6	17	21	9	13	27	18	6	157	56.7%
2015	12	13	14	14	7	17	22	8	18	29	6	160	57.7%
2016	8	11	10	15	15	8	17	22	10	18	6	140	50.5%

Utilization based on 277 although capacity may have changed slightly over the years.

3.2 Enrolment Projections (10 Year)

The projected enrolment is provided on a grade by grade basis for the next 10 years (excluding the current year) for the school. This projected enrolment was prepared prior to the changes that were approved in 2016-17 regarding French Immersion and movement of Regular Track Students to St. Joseph CES, and differ from those used in the Initial Staff Report for the analysis of options and future utilization.

Year	JK	SK	1	2	3	4	5	6	7	8	Total	Utilization
2017-18	13	8	11	11	14	15	11	17	29	9	138	50.1%
2018-19	13	12	8	11	11	15	16	12	22	29	149	54.0%
2019-20	12	12	12	8	11	11	15	16	15	22	134	48.3%
2020-21	12	12	12	12	8	11	12	15	20	15	129	47.0%
2021-22	12	12	12	12	12	8	12	12	19	21	132	48.0%
2022-23	12	12	12	12	12	13	9	12	15	20	129	46.6%
2023-24	12	12	12	12	12	13	13	9	16	16	127	45.9%
2024-25	12	12	12	12	12	13	13	14	12	16	128	46.2%
2025-26	12	12	12	12	12	13	13	14	18	12	130	47.0%
2026-27	13	12	12	12	12	13	13	14	18	18	137	49.5%

3.3 Student Proximity Measure

Student proximity measures the distance from the student's home address to the school using straight line distance. The data is aggregated by grade division and expressed as both a total number of students and as a percentage of the current year enrolment based on March 27, 2017.

Division	<1000 meters	1000-1600 meters	1600-3200 meters	>3200 meters
Primary JK-3	27	11	6	15
Junior 4-6	19	3	8	17
Intermediate 7-8	5	4	8	11
Total Students <i>(Not including CASA students)</i>	51	18	22	43
% of Total	38.5%	13.4%	16.4%	32.1%

Average Distance to School in Kilometers – Not Available	kms
--	-----

3.4 Out of Area Students

Out of Area students are calculated using the home address of the student as compared to the current school boundary.

Division	In Area Students	Out of Area Students	% Out of Area
Primary JK-3	50	8	13.8%
Junior 4-6	38	6	13.6%
Intermediate 7-8	24	3	12.5%
Total Students <i>(Not including CASA students)</i>	112	17	13.17%

Out of Area Students based on data from March 27, 2017

3.5 Student Transportation Data

Student transportation data is calculated for the current year as of March 27, 2017. The students entitled to transportation are those identified by DSTS by virtue of distance to school, by identified impediments to safe access to school (i.e., road conditions) or by identification from student services.

Division	Entitled to Transportation	Not Entitled to Transportation	% Not Entitled to Transportation
Primary JK-3	22	36	62%
Junior 4-6	18	24	57%
Intermediate 7-8	20	8	29%
Total Students	60	68	53.1%

For Transported Students	
Shortest Bus Ride (in minutes)	3 minutes
Longest Bus Ride (in minutes)	64 minutes
Average Bus Ride (in minutes)	23 minutes

Student Transportation Data based on data from March 27, 2017

SECTION 4 – INSTRUCTIONAL DATA

4.1 Staff Allocation to School

The staff allocation to school includes the current year teaching and non-teaching staff allocation to the school. The staff values are expressed to two decimal places.

Teaching Staff Allocation	Number
Classroom Teachers (including CASA)	7
Program Support	.5
Integrated Arts (JK-3)	.33
FSL (4-8)	.5
Extra Prep Time	
SERT	1.0
Library	
Principal	1.0
Vice-Principal	
Total	10.33

Non-Teaching Staff Allocation	Number
Secretary	1.0
EA's	4.5
Custodians	1.56
ECE	1.0
Library support	.46
ASD Workers	2.0
Total	10.52

Total Staff	20.85
--------------------	--------------

4.2 Specialized Courses and Programs Offered

Please indicate if the school has any of the following programs and the grades served by these programs. If the program is not listed here, please insert a line and add the program.

Programs	Yes/No	Grades
French Immersion	No	
Extended French	No	
CASA – Special Education program	Yes	various

4.3 Grade Organization

For the elementary school please indicate the number of students by grade and the organization for each class using the data from the Staffing Plus system. The teacher's names should not appear. Where schools have a French program, please indicate the staffing and class composition for this as well.

Teacher	Staff FTE	Program	JK ELKP	SK ELKP	1	2	3	4	5	6	7	8	SPED	Total
A	1.0		8	11										19
B	1.0				10	10								20
C	1.0					5	15							20
D	1.0							8	17					25
E	1.0									22				22
F	1.0										10	18		28
G	1.0	CASA											6	6
Total	7.0		6	11	20	15	15	8	17	22	10	18	6	140

Number of Classes	7
Number of Combined Classes	5
% of Combined Classes	71%

4.4 Extra-Curricular Activities

Provide a list of all extra-curricular activities including athletic teams, clubs, performing arts, community outreach and other school sponsored events that have been run within the last year. For each activity indicate the number of participants or teams.

Extra-Curricular Activity	Participants
Talent Show	25
Cross-Country Running	40
Junior Soccer	30
Senior Soccer	30
Senior Volleyball	24
Senior Basketball	24
Track & Field Events	40
Co-Ed Senior Baseball	32
Christmas Concert	All Students - 141

SECTION 5 – OTHER DATA

5.1 Non-School Programs and Services

This section describes the current non-school programs or services at the school as well as any revenue from these non-school programs or services.

Program or user Group	Room(s) Used	Revenue From Current Year	Cost Recovery
Not applicable			

5.2 Facility Partnerships at School

This section describes the current facility partnerships located at the school as defined by the Community Planning and Partnership Guidelines as well as the revenue received from these partners.

Facility Partner	Room(s) Used	Revenue From Current Year	Cost Recovery
Not applicable			

5.3 Community Use of Schools Data

Provide the details for the Community Use of Schools for the current year including all permits up to the end of June that are in the current system. Indicate the category from the Community Use of Schools procedure, the number of hours used annually by the group and the days of the week that the permit user operates on.

Community Use Group	Category	Hours Used Annually	Days Used
Northumberland Cares for Children	Non-profit	2015-16: 942.50 2016-17: 828.50	Various

Notes

NCFC is no longer using space in the building as at June 2017.

5.4 Childcare

Please provide details regarding the Child Care programs at the school which are licensed under the Day Nursery Act. This information will include the Child Care Operator, the licensed program capacity and the current number of children enrolled.

Child Care Operator		
Program	Licensed Capacity	Current Enrollment
Infant	Not applicable	
Toddler	Not applicable	
Pre-School	Not applicable	
Nursery School	Not applicable	
School Aged	26	21

Please indicate the square footage of the discrete space child care and the shared space child care areas as indicated on the child care license for the current year.

Licensed Spaces at School	
Shared Space Area	Room 163
Number of Rooms	1
Annual Revenue Received from Child Care	2016-17: \$1,430

All Child Care centres are run on a cost recovery basis and are operated as not-for-profit entities.

SECTION 6 – FAITH FORMATION/PARISH INFORMATION

Provide information regarding the breadth of the faith formation programs available at the school and all programs run in conjunction with the parish on an annual basis in the current year.

Faith Formation Programs	
Religion and Family Life Programs	JK-8
Sacramental Preparation	Grade 2 and Grade 7
Catholic Social Teachings	JK – Grade 8 Lessons/Monthly Assemblies
Liturgical Celebrations	Monthly Masses Three Times a Year at Church Graduation Mass
Involvement with Parish	Regular Communication/Regular Visits from Parish Priests/Retreats for Students in Sacramental Preparation
Catholic Graduate Expectations, Curriculum Maps and Virtues	JK – Grade 8 Lessons/Monthly Assemblies
Associated Parish(es)	St. Michael of the Archangel Parish, Cobourg
Distance to Parish	2.3 kms

Programs run in conjunction with Parish	Occurrence
Sacramental Preparation for First Eucharist	4 Sessions at Church Lessons as part of Religion Program in Grade 2
Sacramental Preparation for Confirmation	Lessons as part of Religion Program in Grade 7 Retreat held at Parish (1 day)