



**PETERBOROUGH VICTORIA NORTHUMBERLAND AND
CLARINGTON CATHOLIC DISTRICT SCHOOL BOARD**

NOTRE DAME CATHOLIC ELEMENTARY SCHOOL

SCHOOL INFORMATION PROFILE

APRIL 30, 2017

**Peterborough Victoria Northumberland and Clarington
Catholic District School Board**

School Information Profile

All of the information contained within the School Information Profile (SIP) relates to the requirements as outlined within the Ministry of Education's Revised Pupil Accommodation Guideline issued March 26, 2015. The following table of contents outlines the areas to be addressed and the relevant page number within the SIP document.

Table of Contents

Section	Item	Pages
1	FACILITY INFORMATION	3-10
1.1	General Information	3
1.2	Site Plan	4
1.2	Site Plan - Assessment of Parking	5
1.3	Aerial Photo	5
1.4	Room Summary from SFIS	6
1.5	Floor Plan	7
1.6	Boundary Map	8
1.7	Official Plan	9
1.8	Zoning Map	10
2	FACILITY CONDITION	11-13
2.1	Facility Index Value	11
2.2	10 Year Renewal History	11
2.3	5 Year Renewal Requirements	12
2.4	School Utility Costs	12
2.5	School Accessibility Measures	13
3	STUDENT DATA	13-15
3.1	Enrolment History (10 year)	13
3.2	Enrolment Projections (10 Year)	14
3.3	Student Proximity Measure	14
3.4	Out of Area Students	15
3.5	Student Transportation Data	15
4	INSTRUCTIONAL DATA	16-18
4.1	Staff Allocation to School	16
4.2	Specialized Courses and Programs Offered	16
4.3	Grade Organization (Elementary)	16-17
4.4	Extra-Curricular Activities	17-18
5	OTHER DATA	18-19
5.1	Non-School Programs and Services	18
5.2	Facility Partnerships at School	18
5.3	Community Use of Schools Data	19
5.4	Child Care	19
6	FAITH FORMATION/PARISH INFORMATION	20

SECTION 1 - FACILITY INFORMATION

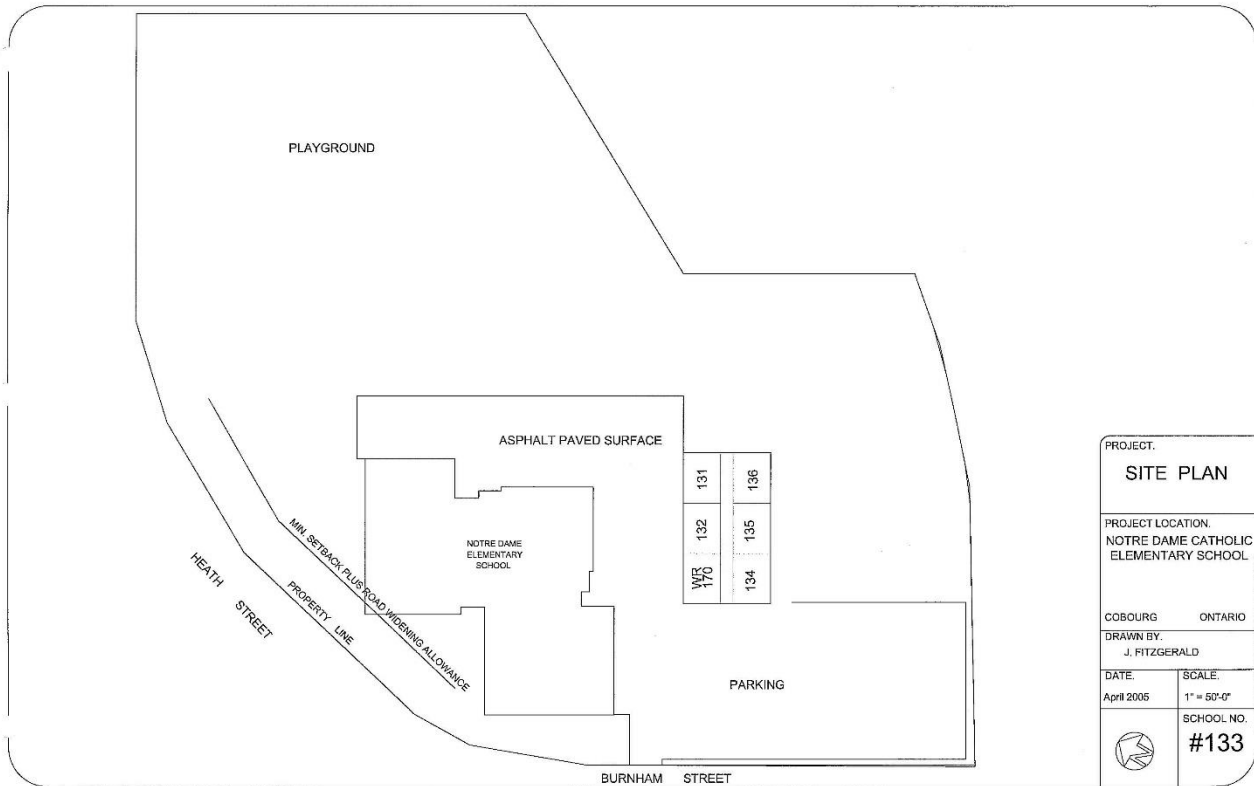
1.1 General Information

The following table provides general information from the School Information Profile for the particular school. Data contained in this table will be replaced with the actual data for each school.

School Name	Notre Dame Catholic Elementary School
Address	760 Burnham Street, Cobourg ON
Panel	Elementary
Grades Served	JK-8 with Gr7&8 French Immersion. By Sept.2018, JK-8 English only. French Immersion will have transitioned back to St. Michael.
Ministry on-the-Ground Capacity (OTG)	230
Current Enrolment as of October 31	281
Current Utilization Rate	122%
Building Area (sq. ft.) (from Integrated Facility Assessment Report)	20,700 sq. ft.
Site Area (Acres)	6.2 acres
Date(s) of Construction	1962 original school (36%), 1967 addition (64%)
Hard Surface Play Area (sq. ft.)	15,526 sq. ft.
Number of Parking Spaces	35 (includes 1 handicap space)
Number of Portable Classrooms	6-pack (one classroom converted to washrooms)
Child Care on Site	No
Name of Child Care Provider	N/A
Type of Child Care	N/A
Child Care Capacity	N/A
Child Care Enrolment and Ages served	N/A

1.2 Site Plan

The following provides a map showing the school site, the location of the building, the parking areas, driveways, pick-up and drop-off areas for buses and cars, existing portables, outdoor play areas, kindergarten play areas, building entrances, child care entrances, child care centres or licensed discrete space uses.



1.2 Site Plan (Cont'd)

Assessment of Parking

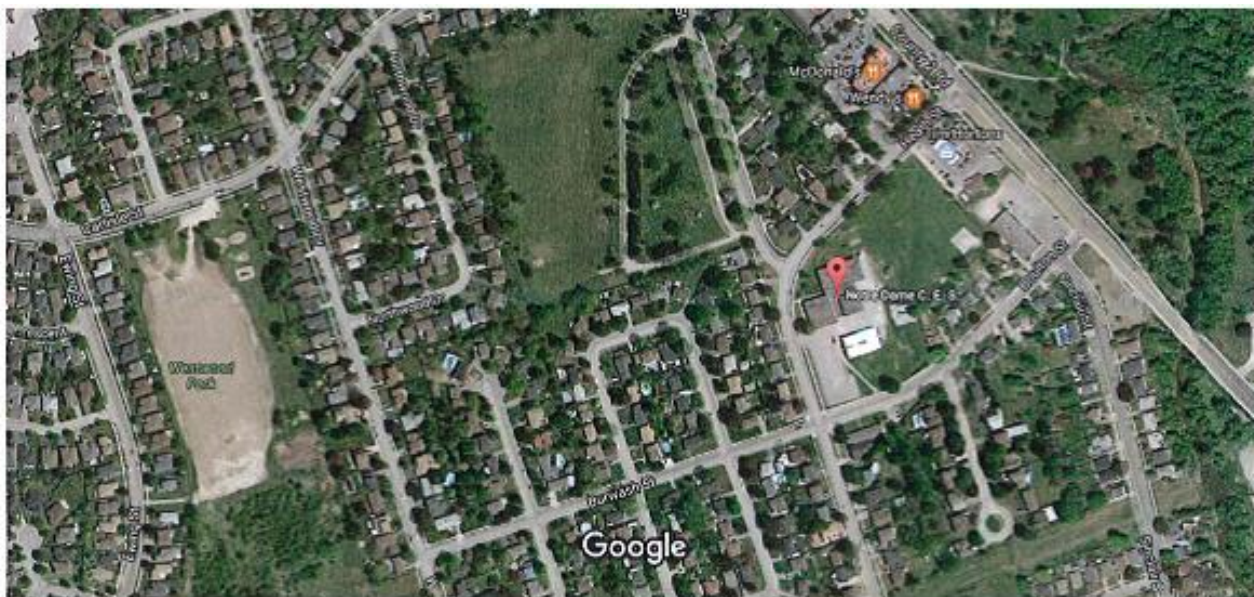
Provide a written assessment of the parking, pick-up and drop-off areas as outlined on the site plan above, and any required improvements or studies that should be undertaken to improve the site.

Parking lot does not separate buses from cars. Buses stay on the street.

The number of parking spaces is adequate.

1.3 Aerial Photo

The following provides an aerial photo showing the school site, the property outline of the school and adjacent land uses.



1.4 Room Summary from SFIS

The following is a sample room loading template which is provided for the purposes of illustration. The actual template will be submitted for each affected school.

Date: July 18, 2016


SFIS ID and Name: 9263

Room Number	Space Type	Current Use	Loading	Loading FC	Comments
1	Classroom	Classroom	23.0000	23.0000	
2	Classroom	Classroom	23.0000	23.0000	
3	Classroom	Classroom	23.0000	23.0000	
4	Classroom	Classroom	23.0000	23.0000	
5	Classroom	Classroom	23.0000	23.0000	
6	Classroom	Classroom	23.0000	23.0000	
7	Classroom	Classroom	23.0000	23.0000	
8	Classroom	Classroom	23.0000	23.0000	
9	Classroom	Kindergarten	23.0000	23.0000	
10	Classroom	Classroom	23.0000	23.0000	
11	General Purpose Room	General Purpose Room	0.0000	0.0000	
12	Library Res. Centre	Library Resource	0.0000	0.0000	
211	Staff Work Room/Lounge	Staff Work Room/Lounge	0.0000	0.0000	
		OTG	230.0		

1.5 Floor Plan(s)

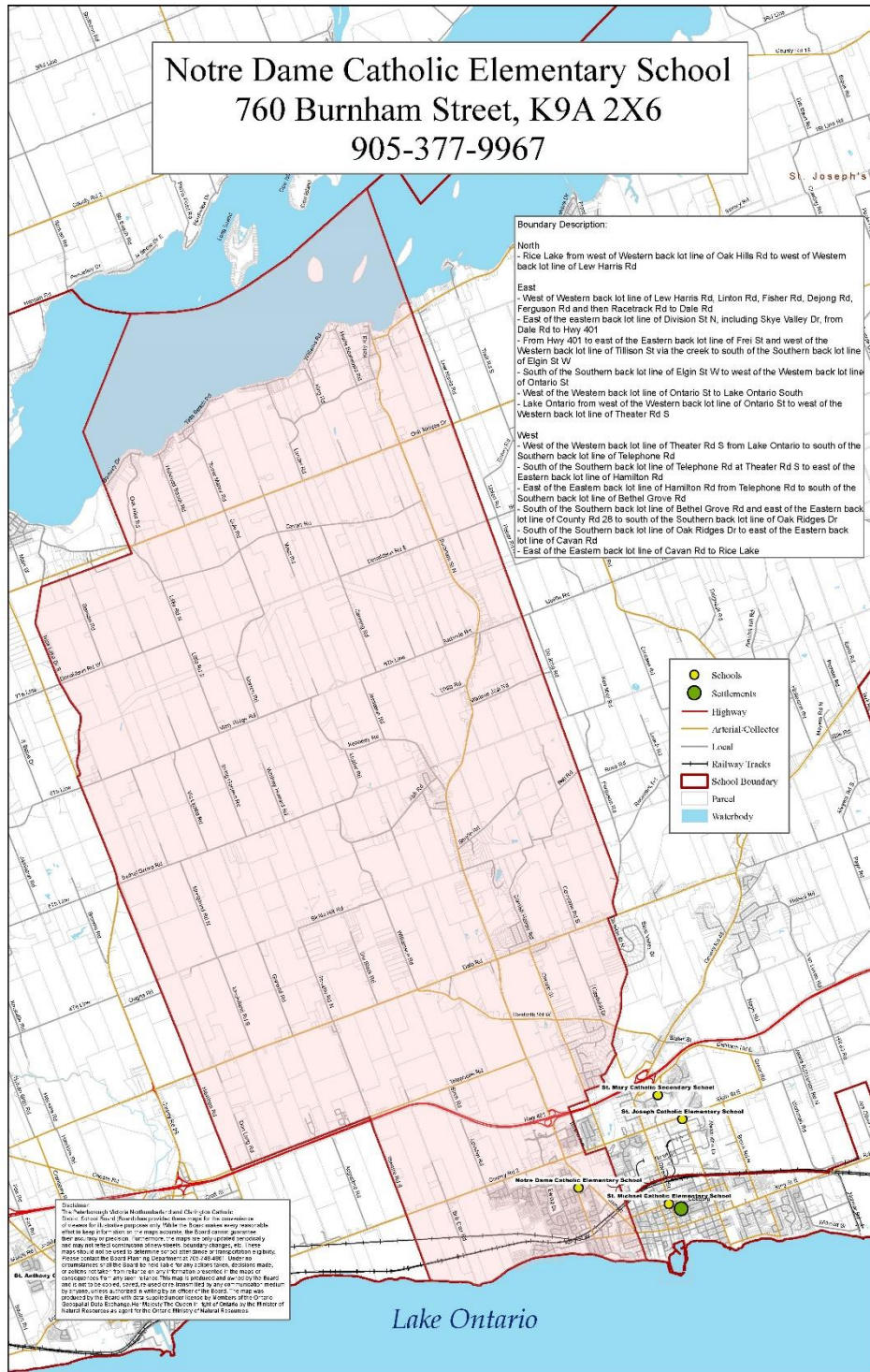
The following provides a school floor plan for each floor of the school. Where a school has two or more floors, the first floor will be on the first page, the second floor on the second, etc.



PROJECT. FIRST FLOOR PLAN	
PROJECT LOCATION. NOTRE DAME CATHOLIC ELEMENTARY SCHOOL	
COBOURG	ONTARIO
DRAWN BY. J. FITZGERALD	
DATE. April 2005	SCALE. 1" = 20'-0"
	SCHOOL NO. #133A

1.6 Boundary Map

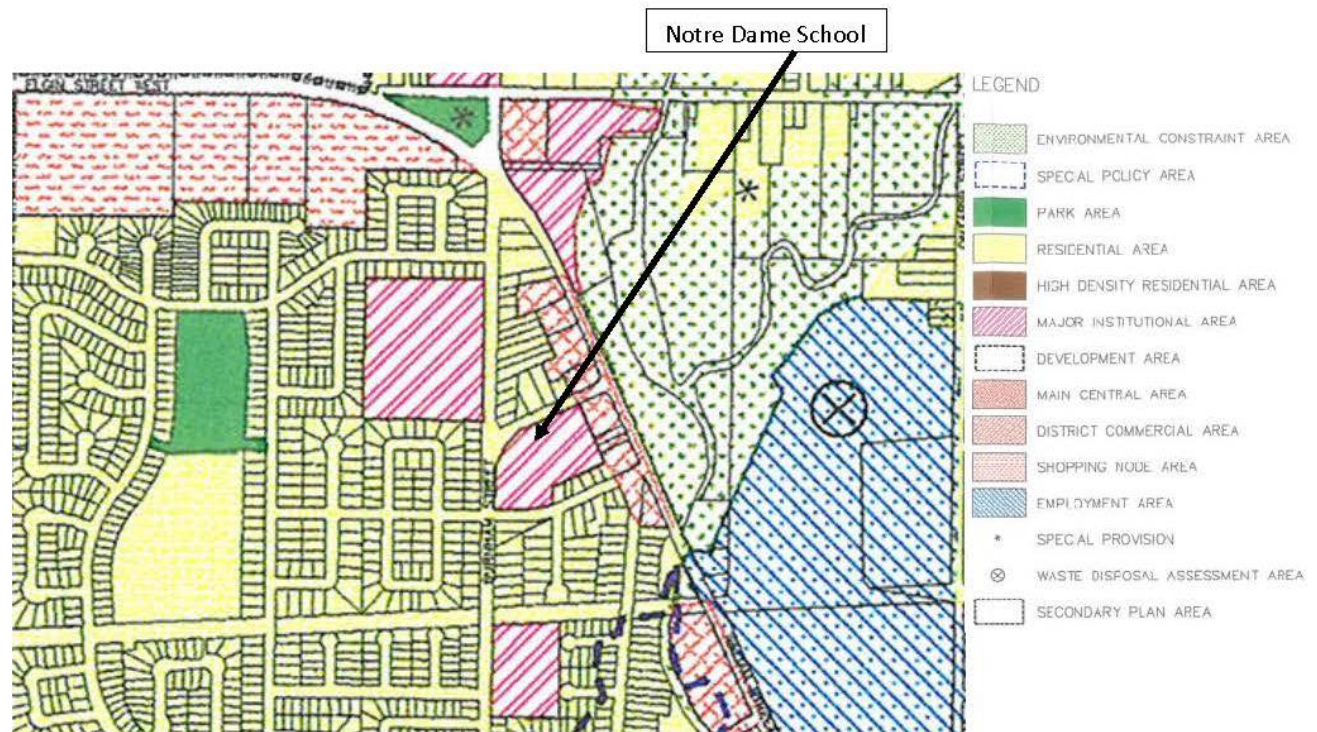
The following provides a map showing the school location and the boundary for the school for each program. Where a school serves both a regular tract and French program, the regular tract boundary will be on the first page and the French program boundary(s) will be shown on subsequent pages.



1.7 Official Plan

The following provides a map showing the school site, the current official plan or secondary plan designation from the municipality for the school site and adjacent lands. The official plan description is added below the map or on an adjacent page.

Town of Cobourg Official Plan (2002) Land Use Designation: Major Institutional Area



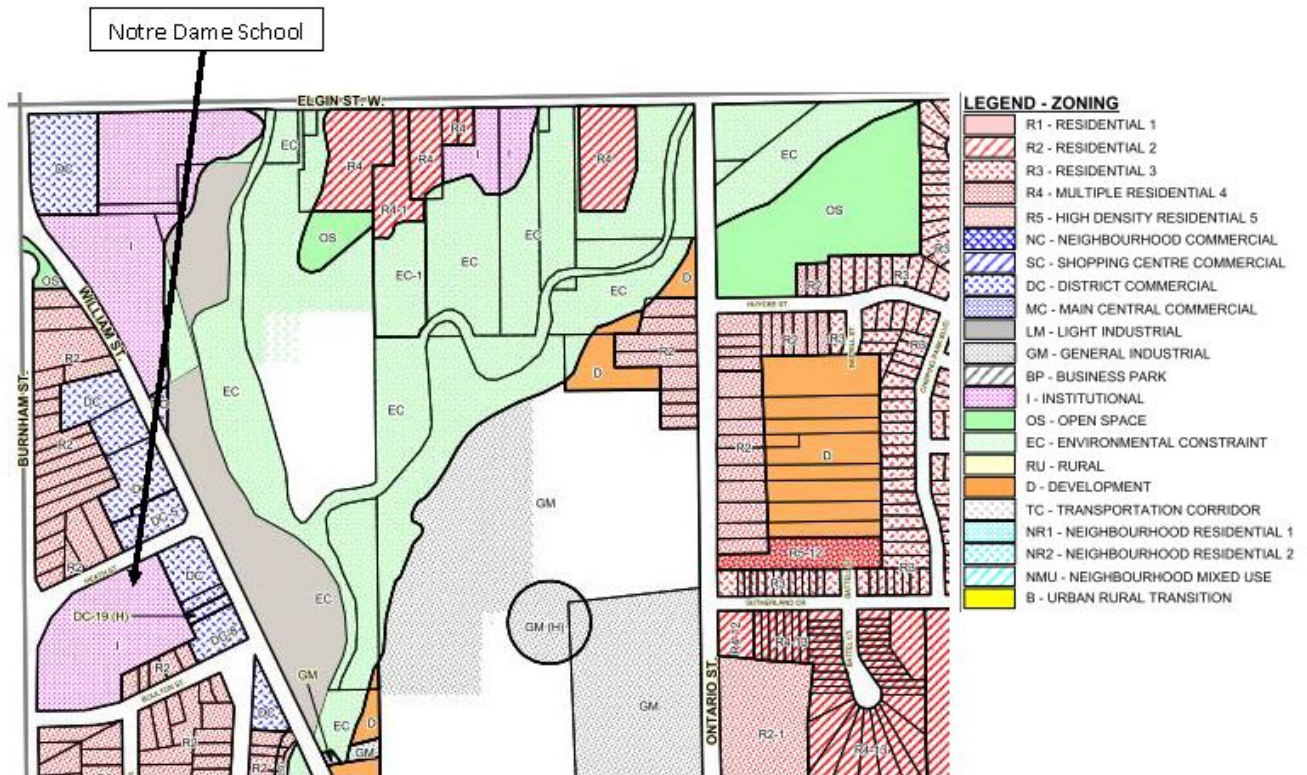
Excerpted from Town of Cobourg Official Plan (2002), Schedule A, Land Use Plan

1.8 Zoning Map

The following provides a map showing the school site, the current zoning from the municipality for the school site and adjacent lands, and any dual or underlying zoning on the property. The zone description is added below the map or on an adjacent page.

Notre Dame School, Cobourg

Town of Cobourg Comprehensive Zoning By-law #85-2003: Institutional (I) Zone



Excerpted from Zoning By-law #85-2003, Schedule A, Map #9

SECTION 2 - FACILITY CONDITION

2.1 Facility Index Value

The Facility Condition Index (FCI) is the building condition as determined by the Ministry of Education by calculating the five-year renewal needs and the replacement value for each facility. These values were determined by a report completed in 2013.

School Name	Notre Dame Catholic Elementary School
Replacement Value (A)	\$5,739,995
5 Year Renewal Needs (B) per Ministry 2013 inspection and limited scope	\$637,422
10 Year Renewal Needs based on expanded assessment and program scope (C)	\$9,353,041
Facility Condition Index (B) / (A) per Ministry	11%
Integrated Facility Assessment (C) / (A)	163%

2.2 10 Year Renewal History

The 10 year renewal history lists those major repairs at the school which are captured by the TCPS data base. The summary includes the year undertaken, the specific renewal item (e.g., Roof Replacement), the value of that repair and a cumulative value of all repairs undertaken within the 10 year time frame. The table excludes routine maintenance and other items not considered as renewal under the Tangible Capital Assets guide.

Year	Renewal Item	Cost	Cumulative Cost
2010-11	Roofing	\$8,811	\$8,811
2011-12	Gym wall padding and painting	\$19,476	\$28,287
2012-13	Full-day kindergarten minor retrofit	\$7,884	\$36,171
2012-13	Lighting	\$10,459	\$46,630
2012-13	Lighting	\$5,420	\$52,050
2012-13	Whisper AC units	\$62,049	\$114,099
2012-13	Plumbing/painting/drapes	\$21,302	\$135,401
2013-14	Summit Mechanical AC	\$18,638	\$154,039
2013-14	Full-day kindergarten retrofit	\$48,037	\$202,076
2014-15	Roofing repair and insulation	\$48,873	\$250,949
2015-16	Access points	\$4,168	\$255,117
2015-16	Painting	\$6,206	\$261,323
	Total	\$261,323	

2.3 5 Year Renewal Requirements

The 5 year renewal requirements lists those major repairs which are captured by the TCPS data base and the Facilities Services department, and listed by priority. The summary includes the year to be undertaken, the specific renewal item (e.g., Roof Replacement), the value of that repair and a cumulative value of all proposed renewal projects.

Year	Renewal Item	Priority	Cost	Cumulative Cost
2016	Roof, windows, etc.		\$624,000	\$624,000
2017	Wall and floor finishes		\$24,200	\$648,200
2018	Doors, plumbing fixtures		\$647,000	1,295,200
2022	Stairs		\$1,000	\$1,296,200
	Total		\$1,296,200	

2.4 School Utility Costs

The utility cost data will be reported for the last complete year available and includes the costs for Natural Gas, Water, and Electricity as billed by the local utility. The total cost represents the cost for the year including the costs for portables or other licensed or leased facilities within the school (i.e., child care centre).

Utility Costs for Year	
Natural Gas	n/a – school is electrically heated
Water	\$9,978
Hydro	\$53,264
Total	\$63,242
Building Area – Permanent (A)	19794.83 sq. ft.
Building Area – Non Permanent (B)	4606.95 sq. ft.
Total Building Area (A+B)	24401.78 sq. ft.
Cost per square foot	\$2.59 sq. ft

Notes on Utility Costs

Notre Dame is electrically heated, as is the port-a-pack. The square footage figures used differ slightly from the Building Area reported in the Initial Staff Report. The figures used are those reported in the Ministry School Facility Inventory System (SFIS).

2.5 School Accessibility Measures

The school accessibility measure represents the current accessibility inventory for the school as calculated by the Facilities Services Department.

School Name	Notre Dame Catholic Elementary School
Number of Storeys	1
Accessible Entrance	Yes
Door Operator	
Front	Yes
Other	
Lift Device	
Elevator	No
Stage Lift	No
Other Lift	
Barrier Free Washroom	Yes both girls and boys
Accessibility to Instructional Area	Yes

SECTION 3 – STUDENT DATA

3.1 Enrolment History (10 Year)

The historical enrolment is provided on a grade by grade basis for the last 10 years including the current year as of October 31 of the year. Any changes to grade configuration or programming will be noted below the table along with an explanation of the phasing in of the decision(s).

Year	JK	SK	1	2	3	4	5	6	7	8	Total	Utilization
2007	7	11	27	18	23	23	23	26	48	57	263	114.3%
2008	14	11	13	25	21	24	28	24	43	50	257	111.7%
2009	25	13	10	13	29	22	26	29	39	43	249	108.2%
2010	9	27	12	12	15	25	20	25	37	38	224	97.3%
2011	22	11	28	15	12	15	30	21	41	48	243	105.6%
2012	14	21	12	33	16	13	15	31	37	39	231	100.4%
2013	14	17	25	13	36	19	15	19	45	38	241	104.7%
2014	12	15	17	25	15	39	26	16	33	45	243	105.6%
2015	13	13	19	20	28	20	41	28	29	33	244	106.0%
2016	13	16	18	23	26	29	22	43	56	33	279	121.3%

3.2 Enrolment Projections (10 Year)

The projected enrolment is provided on a grade by grade basis for the next 10 years (excluding the current year) for the school. This projected enrolment was prepared prior to the changes that were approved in 2016-17 regarding French Immersion and movement of Regular Track Students to St. Joseph CES, and differ from those used in the Initial Staff Report for the analysis of options and future utilization.

Year	JK	SK	1	2	3	4	5	6	7	8	Total	Utilization
2017-18	14	14	17	21	24	28	32	23	61	58	292	127.0%
2018-19	17	15	15	19	23	25	31	34	41	63	283	123.0%
2019-20	14	19	17	17	21	24	28	33	54	42	269	117.0%
2020-21	14	15	20	18	18	22	26	29	60	55	277	120.0%
2021-22	14	15	17	22	20	19	24	28	51	61	271	118.0%
2022-23	14	15	17	19	24	21	21	25	48	52	256	112.0%
2023-24	18	15	17	19	20	25	23	22	58	50	267	116.0%
2024-25	14	19	17	18	20	21	28	24	40	60	261	113.0%
2025-26	14	15	21	18	20	21	24	29	47	41	250	109.0%
2026-27	14	15	17	23	20	21	24	25	53	49	261	113.0%

3.3 Student Proximity Measure

Student proximity measures the distance from the student's home address to the school using straight line distance. The data is aggregated by grade division and expressed as both a total number of students and as a percentage of the current year enrolment based on March 27, 2017.

Division	<1000 meters	1000-1600 meters	1600-3200 meters	>3200 meters
Primary JK-3	41	12	5	38
Junior 4-6	26	17	19	32
Intermediate 7-8	18	13	14	44
Total Students	85	42	38	114
% of Total	30.5%	15%	13.6%	41%

Average Distance to School in Kilometers - Not Available	kms
--	-----

3.4 Out of Area Students

Out of Area students are calculated using the home address of the student as compared to the current school boundary.

Division	In Area Students	Out of Area Students	% Out of Area
Primary JK-3	68	1	1.47%
Junior 4-6	65	8	12.3%
Intermediate 7-8	69	2	2.89%
Total Students	202	11	5.4%

Out of Area Students based on data from March 27, 2017

3.5 Student Transportation Data

Student transportation data is calculated for the current year as of March 27, 2017. The students entitled to transportation are those identified by DSTS by virtue of distance to school, by identified impediments to safe access to school (i.e., road conditions) or by identification from student services.

Division	Entitled to Transportation	Not Entitled to Transportation	% Not Entitled to Transportation
Primary JK-3	44	25	36.2%
Junior 4-6	38	35	47.9%
Intermediate 7-8	42	29	40.8%
Total Students	124	89	41.4%

For Transported Students	
Shortest Bus Ride (in minutes)	3 minutes
Longest Bus Ride (in minutes)	63 minutes
Average Bus Ride (in minutes)	15 minutes

Student Transportation Data based on data from March 27, 2017

SECTION 4 – INSTRUCTIONAL DATA

4.1 Staff Allocation to School

The staff allocation to school includes the current year teaching and non-teaching staff allocation to the school. The staff values are expressed to two decimal places.

Teaching Staff Allocation	Number
Classroom Teachers	11
Program Support	.84
Prep Time (JK-3)	.5
FSL (4-8)	1.0
Extra Prep Time	
SERT	1.0
Library	
Principal	1.0
Vice-Principal	
Total	15.34

Non-Teaching Staff Allocation	Number
Secretary	1.0
EA's	2.0
Custodians	1.44
ECE	1.0
Library Support	.46
Total	5.9

Total Staff	21.24
--------------------	--------------

4.2 Specialized Courses and Programs Offered

Please indicate if the school has any of the following programs and the grades served by these programs. If the program is not listed here, please insert a line and add the program.

Programs	Yes/No	Grades
French Immersion	Yes until Sept.2018	Gr 7 and 8
Extended French	No	
Early Intervention Program	No	

4.3 Grade Organization (Elementary)

For the elementary school please indicate the number of students by grade and the organization for each class using the data from the Staffing Plus system. The teacher's

names should not appear. Where schools have a French program, please indicate the staffing and class composition for this as well.

Teacher	Staff RTE	Program	JK ELKP	SK ELKP	1	2	3	4	5	6	7	8	Total
A	1.0		13	16									29
B	1.0				18	3							21
C	1.0					20							20
D	1.0						20						20
E	1.0						6	17					23
F	1.0							12	13				25
G	1.0								9	17			26
H	1.0									26			26
I	1.0										30		30
J	1.0										6	21	27
K	1.0	FI									20	12	32
Total	11.0		13	16	18	23	26	29	22	43	56	33	279

Number of Classes	11
Number of Combined Classes	7
% of Combined Classes	64%

4.4 Extra-Curricular Activities

Provide a list of all extra-curricular activities including athletic teams, clubs, performing arts, community outreach and other school sponsored events that have been run within the last year. For each activity indicate the number of participants or teams.

Extra-Curricular Activity	Participants
Inter-school athletics...soccer, cross country, volleyball, basketball, softball	Intermediate Students (80 students)
Bi-Annual Theatre Arts Production	Intermediate Students (50 students)
Library Club	Junior Students (10 students)
Intramurals	Intermediate Students (40 students)
Trent Enrichment Opportunities	Intermediate Students (30 students)
Environmental Club	Whole school
Talent Show	Whole School (50 students)
Christmas Concert	Whole school

Extra-Curricular Activity (Cont'd)	Participants
Lenten Clothing Drive, to support St. Vincent de Paul	Whole school
Lenten Food Drive- support Northumberland Food 4 All	Whole school
Terry Fox Run/walk	Whole school
Fresh from the Farm	Whole school
Refugee Family Support	Whole school
Jump Rope for Heart	Whole school
United Way	Whole school
Anti-Bullying Pink Shirt Day	Whole school
World Vision	Whole school

SECTION 5 – OTHER DATA

5.1 Non-School Programs and Services

This section describes the current non-school programs or services at the school as well as any revenue from these non-school programs or services.

Program or user Group	Room(s) Used	Revenue From Current Year	Cost Recovery
Not applicable			

5.2 Facility Partnerships at School

This section describes the current facility partnerships located at the school as defined by the Community Planning and Partnership Guidelines as well as the revenue received from these partners.

Facility Partner	Room(s) Used	Revenue From Current Year	Cost Recovery
Not applicable			

5.3 Community Use of Schools Data

Provide the details for the Community Use of Schools for the current year including all permits up to the end of June that are in the current system. Indicate the category from the Community Use of Schools procedure, the number of hours used annually by the group and the days of the week that the permit user operates on.

Community Use Group	Category	Hours Used Annually	Days Used
See Notes.			

Notes

Very minimal use of school and/or field for community use.

5.4 Childcare

Please provide details regarding the Child Care programs at the school which are licensed under the Day Nursery Act. This information will include the Child Care Operator, the licensed program capacity and the current number of children enrolled.

Child Care Operator		
Program	Licensed Capacity	Current Enrollment
Infant	Not applicable	
Toddler	Not applicable	
Pre-School	Not applicable	
Nursery School	Not applicable	
School Aged	Not applicable	

Please indicate the square footage of the discrete space child care and the shared space child care areas as indicated on the child care license for the current year.

Licensed Spaces at School	
Discrete Space Area	Not applicable
Shared Space Area	Not applicable
Number of Rooms	Not applicable
Annual Revenue Received from Child Care	Not applicable

All Child Care centres are run on a cost recovery basis and are operated as not-for-profit entities.

SECTION 6 – FAITH FORMATION/PARISH INFORMATION

Provide information regarding the breadth of the faith formation programs available at the school and all programs run in conjunction with the parish on an annual basis in the current year.

Faith Formation Programs	
Religion and Family Life Programs	Family Life Education is taught through the lens of the Fully Alive program in Grades 1 through 8.
Sacramental Preparation	Grade 2 and Grade 7. The school supports the grade two students by following the Religion curriculum for and assists with the planning of the delivery of the sacraments. Grade seven students prepare for Confirmation through the classroom delivery of the sacramental program, priest support and Confirmation Retreat.
Catholic Social Teachings	The school takes every opportunity to demonstrate the relevancy of our Catholic Social Teachings particularly during community outreach projects and when there are relevant curriculum connections.
Faith Formation Programs	
Liturgical Celebrations	The Catholic Liturgical school year calendar is developed with the parish priest prior to beginning of school year and followed throughout the year. School masses are held at the church and religious observances are held at the school throughout the year.
Involvement with Parish	The parish priest of St. Michael the Archangel Parish makes regular visits to the school to talk to classes on themes related to their faith journey and on points of emphasis as related to the liturgical calendar. The priest offers confessions at the school to support students. and offers just to talk to students about events in their lives
Catholic Graduate Expectations, Curriculum Maps and Virtues	The Catholic Graduate Expectations are incorporated into the daily life at Notre Dame Catholic Elementary School. Staff refer to the expectations regularly and the students are reminded of them throughout the school year as situations present themselves and during whole school assemblies.
Associated Parish(es)	St. Michael the Archangel Parish, 379 Division Street, Cobourg, Ontario
Distance to Parish	2.3 KM

Programs run in conjunction with Parish	Occurrence
Sacramental Preparation for First Eucharist	4 Sessions at Church Lessons as part of Religion Program in Grade 2
Sacramental Preparation for Confirmation	Lessons as part of Religion Program in Grade 7 Retreat held at Parish (1 day)